

Tic Mapatpat me Pwonye ki Gang

PWONYE
time kan mo
keken, i caa
mo keken
dok pi dano



EENET – Enabling Education Network

PO Box 422

Hyde

Cheshire

SK14 9DT

UK



www.eenet.org.uk



info@eenet.org.uk



+44 (0)7929 326 564



This work is licensed under the Creative Commons Attribution-NonCommercial-ShareAlike 4.0 International License. To view a copy of this license, visit <http://creativecommons.org/licenses/by-nc-sa/4.0/>

Tic man gimiyoy lanycec pire ite Creative Commons Attribution-Non-Commercial-ShareA like 4.0 International License. Ka imito nenno kopi me lanycec man, cit i <http://creativecommons.org/licenses/by-nc-sa/4.0/>

Jami ma nonge i buk man

Lok mukwongo			4
Potto tic mapatpat pi lutino ma mito pwonye maber pi gin ma gitye ki goro			6
Tic mapatpat ma tye			8-73
Buk pi ABC	8	Coyo nying jami	39
Ger/ yik ot mo ma odongo mabor	10	Goo cal/mep me kabedo megì	40
Ger yo ma kigingi tye iye	11	Yub gin tuku ki cokci	42
Calcumaze (Goo cal yo oyo)	13	Mancala onyo tuku mo me kwan marwatte ki man	44
Tedo ki nama mapat-pat	16	Neno cwec pa rubanga	46
Yik tuku me wii bod nyo abam	18	Wer manyen, dwan macon	49
Itye kaneno ngo ma atye kaneno?	20	Nonsense poetry	50
Goo cal pa lee maleng adada	21	Pit nyig kodi ci dong i nen kit ma dongo kwede	53
Goo cal pa boma madit kit ma itye katamo atama iwii ni	23	Kwan karacel	55
Jami macwinyi maro	25	Dwar pa acut	58
Wek yeya megì opye iwi pii	27	Agony imung	60
Cito I cuk	28	Kit kom (Cep) ki paten ma iwi lobo	62
How many words ...?	30	Gure I lawala me tito ododo	64
Kace onongo atye ladit lobo ...	31	Foo lateka ma ikin lwak	66
Lok ki/peny ngat mo ma otegi	33	Dwar lonyo	67
Yub Cuma (jami tic onyo cuma)	35	Lapenye pyeroaryo	69
Yubo jami ki I kom yugi/jami madong gitenyo	37	Waraga bot lafonyi	71

Lok mukwongo

Tic magi tye pi anga?

- Tic magi tye pi **paco weng pa** lutino ma pe tye nyo tye ki goru.
- Tic magi tye pi **dano weng** – mego ki wego, lumi kony, anyira ki awobe, dano ma pwud pe gudongo, lamego ki lumego, daa mapatpat ki kwaro bene mapatpat, jo pa neyo ki lamego pa wego ki mego. Gum tye mapol ataa me pwonye kacel.

Tic magi gin aye ngo?

Man obedo tic ma girubo woko kacel calo gin **'ma giketo i kicaa'** pi lutino anyira ki awobe me mwaka weng ki lunyodo gi, lumi kony ki dano ma gang me timmo nr ki gang. Dano mo keken twero tic ki tam ki diro me kwiri gi me yikko ngec maber ka gitiyo ki tic magi. Pol tic magi gitwero timmo ne tyen mapol dok bene i kit yo mapatpat.

Ngo mu miyo giyiko tic magi?

Tic magi konyo kor yo mapatpat ma lutino tiyo me pwonye ki gang. Itwero ngeyo tic magi mukene pien lutino ni dong kombedi gitye ka timmo ne. Tic magi konyo dano me paco bedo ma gitye ki ngec i **kit ma pwonye woto kwede ki igang** ki bene kit ma pwonye ki i gang konyo me yubbu pwonye ma i gang kwan.

Kit me tic ki tic mapatpat magi?

Nen tic mapatpat magi ki latin ma megi. Wek latin kwany tic ma en neno ni yomo cwinye. Tic magi pe gimito ni tim iyo acel keken ma giyero.

Ngec tye ma gimiyu pi tic acel, kit magi:

Omyero ibed ki: Bokci man cimo kit yikke ki jami mene ma mitte pi tiyo tic man. Tic mukene pe mito jami mo, mukene mito kalam kalo ki karatac me coc, nyo kad mogo ki jami mogo ma nonge gang kenyo dok bene nongo welle peke.

Gin ma myero itim: Tam me tic magi gicoyo pi latin me wek en olub. Lutino ma twero kwanno ne twero woppo citep man kore ki kore ken gi. Lutino mukene ywero mitto kony mogo ma aa ki bot dano madit nyo lamego /lumego madit ma twero kwanno.

Tic mukene mameda: Kare mukene tic mapatpat mukene gitwero riddo ne me miyo lutino ma dito nyo ma kitti gi tye tic ma nyweno wii dano manok.

Ite tic acel acel tye ngec pi konyi yero tic ma rwatte pi latin ma meggi, man tye iye:

Mwaka: Man miyo tam pi gurup me mwaka acel acel ma tic mo ni romo bedo maber pir gi, ento kono lutino me kit mwaka mo keken twero tiyo kit tic acel. Adwogi ne gwok bibedo ma opokke, lapor otino ma dito twero coyo madwong, nyo goyo maber. Gin ma gibiyiko twero pokke.

Kony bot ngat mutegi/omego ki lamego: Man miyo tam ni ka in nyo omeo nyo amego madit twero konyo latin manok nyo dang matek, nyo ka gin gitwero tiyo tic man ken gi. Ngec man bikonyi me mokko tami ka itwero bedo macok ma itimo gin mukene makun latin tye ka tiyo man. In nyo omin nyo lamin caa mukene twero mitte ni myero mi kony bot lutino ma mito akonya pi goro nyo peko me kwan tye bot gi.

Gin ma ibi nongo ki i pwony man(ngec) ki gin ma ibitimo (diro): tic acel acel konyo latin me meddo ngec gi, nyo tiyo nyo ngeyo diro manyen. Bokci matye ite tic acel acel nyutu kit ngec ki diro ma tic man mako. Pol pa tic magi tye iye yikko, gero nyo yubbu gin mo ma konyo latin temmo tic ki diro ma pir gi tego. Diro magi tye iye kubbo lok, notte (tic ki dano mukene), diro me tam, tyekko peko,, tam matut ki kubbe ki tic me kom dano. Gang kwan mapatpat ki lupwonye ngeyo ni diro magi pire tek. Lutino pol kare pe gitye ki caa muromo me temmo tic ki diro magi i gang kwan. Ka gitye gang gum tye ataa me pwonye iyo me tuku ki iyo me tiyo tic ma jwii calo tedo.

Yo mapatpat me timo tic man: Pol tic mapatpat tye iye tam me potto nyo lokko tic pi latin ma tye ki peko ma mito diro me pwonye mapat ny latin ma tye ki goro. Tic weng lutino ducu twero timmo, ento lutino mukene twero mitto kony mo nyo twero tic ki yo mapatpat me timo kit tic man (calo goyo cal nyo lok kaka coc; nyo miyo tic bedo mayot). Karatac malubu miyo tam mukene me potto tic maber. In ingeyo latini maber dong kumeno in ingeyo gin maber ma twero tic pi gin.

Nge ni, pwonye timme ka mo keken, i caa weng bene.

Potto tic mapatpat pi lutino ma mito pwonye maber pi gin ma gitye ki goro

Bokci ma tye ite tic acel acel miyo tam me lokko nyo tic kwede tic man pi lutino ma tye ki goro ma mito akonya. Latin acel acel pat ki lawote dong tic ma gicimo nu tye ma gimiyo calo tam. Polkare latin bimiyo kit ma en neno kwede kit ma tic myero cit kwede. Ka watye katimmo tic mapatpat ki lutino, wa timo maber ka wakonyo gin ki ngeyo bene ngo maber ma gin twero timmo ne, ngo ma gin mito timmo ki bene kwene ma gin mito kony iye.

Pire tek me konyo latin, ento ket tek inen ni pe itiyoy tic magi 'pir' gin-gin myero winy ma pir gi ken gi ni gitiyo gin ma yomo ii gi. Pe ibed kitam ni latin pe twero tic mo. Itwero nongo diro mapatpat me tiyo tic man me miyo gum bot dano acel acel me tiyo.

Ping kany tye tam mukene ma gimiyo pi ma tye ki goro ma ngeye nyo ma pwonyo kwan gi tek. Tam magi gitwero tic kwede i kit tic mapatpat ma gicimo.

Lutino ma gitye ki peko me neno

- **Tii ki nukta madito:** ka tic mo ni mito ni gicoo, nen maber ka latin nongo kwanno ne yot i nukta madongo nyo matino ne.. Caa mukene nukta ma tino twero tic maber, pien gitye ki 'nen' maber dok bene pe gunen 'matek' ateka dong miyo gin bedo ma kawanno yot dok ngeyo gin pe tek.
- **Tii ki kala nyo rangi:** Tii ki kala nyo rangi mapat, ka twere, pi coyo nyig lok ma kubu kin lok, (labolle, nyig lok calo ('a') ki en ('the') ki/nyo lok ma nyutu tic calo'loki' 'kel' ki'mii'). Man twero miyo kwan nyo coc bedo yot pi latin.
- **Tii ki jami ma romo agudapi** yikko ki gero jami, me wek lutino matye ki peko me neno bed ma twero 'mullo' ki 'guddu' gin ma gitye kayikko ne.(Me lapor, ger ot kun itiyoy ki gaa mapatpat.)
- **Por cal:** ka cal obedo kin ma tye i tic mo ni, poyo me poro bot latin.
- Poyo ni, tam magi twero konyo lutino weng bene, pa ka dano matye ki goro me neno keken.

Lutino ma tye ki goro me winyo lok

- **Tii ki leb ma giporo apora** ka in ki latin mamegi gingeyo leb man. Nyo pwony wiye wiye kit leb ma giporo apora kacel wun ki latin..
- **Nen wng latinma** pe winyo lok maber ci ilok maber (pe ired areda). Tii **kileb me dul kom dano, ki wangi bene ki cingi me nyuttu** jami me lokko gin ma imito ka wacco ne..

- Tem ki tek me tiyo tic kan ma lero tye, me wek latin nen kit ma del dogi tye kawot kwede. Lok mot pe imumung amunga.
- Tii ki kalam kalo ki karatac (nyo coka ki bod) ka tic mapatpat tye ka wot anyim me coyo coc, nyo goo cal me titto gin ma imito wacco ne.
- Por tic bot latin ka twere ka bedo tic ki lok atita keken (dwon lok nyo lok ki leb me cing pi poro jami).
- Poyo ni, kit magi twero bene konyo lutino mukene, pe lutino ma gitye ki goro me winyo lok keken.

Lutino ma gitye ki goro me wot

- **Ket jami tic ki me konyo tic kan macok:** ket tek inen ni jami ma imito tic kwede giketo kan ma latin twero oo iye oyot.
- **Tem kitek me tic ki jami ma latin twero makko oyot me konyo pi kubbe.** (Me lapor, kalam kalo madit ki kalam bene madit ma makko ne twero bedo mayot.)
- **Tir ki mi bene kony** kan mamitte, (me lapor, itwero konyo latin loro mapeca me tuku ka gitye ka tuku ki tuku ma gituku iwii bod nyo kad).
- **Mi ka tic bed manok:** Lok tic mapatpat me timmo ne otimme kan ma nok, ma gityo labongo wot mapol., (me lapor, tic me dwar nyo yenyo lonyo gitwero timmo ne icika acel ento pe i ot kulu nyo woko).

Lutino matero caa malac me niang tic matye katiye

- **Mii tic bed mayotdok** bene tim kom tic man mogo woko. (Me lapor, itwero wero nucu acel pa wer i 'Wer manyen, dwon macon', pe adek weng; coo coc macek i 'i Yikko Lic'. Latin mamegi twero bene coyo ynig lok patpat ka coyo mabor me nyuttu tam gi.)
- **Goo cal kaka coyo coc.** Pol tic mapatpat tye mamito goyo cal. Pi tic mamito ni latin ocoo coc, gitwero goyo tam mameg gi agoya ka coyo ne acoya.
- **Ngid yo me miyo tam bed matinoikit** citep ma tino ci dok ipeny latin me ne acel acel. (Me lapor, 1, kwany kalam ki karatac, 2, goo gin man, 3, ket kala iye, ki4, tyek ki coyo kop i kome)
- **Nwoo yo me miyo tamkiryo** nyo kidek me wek latin mak wek oniang maber ngec matye.

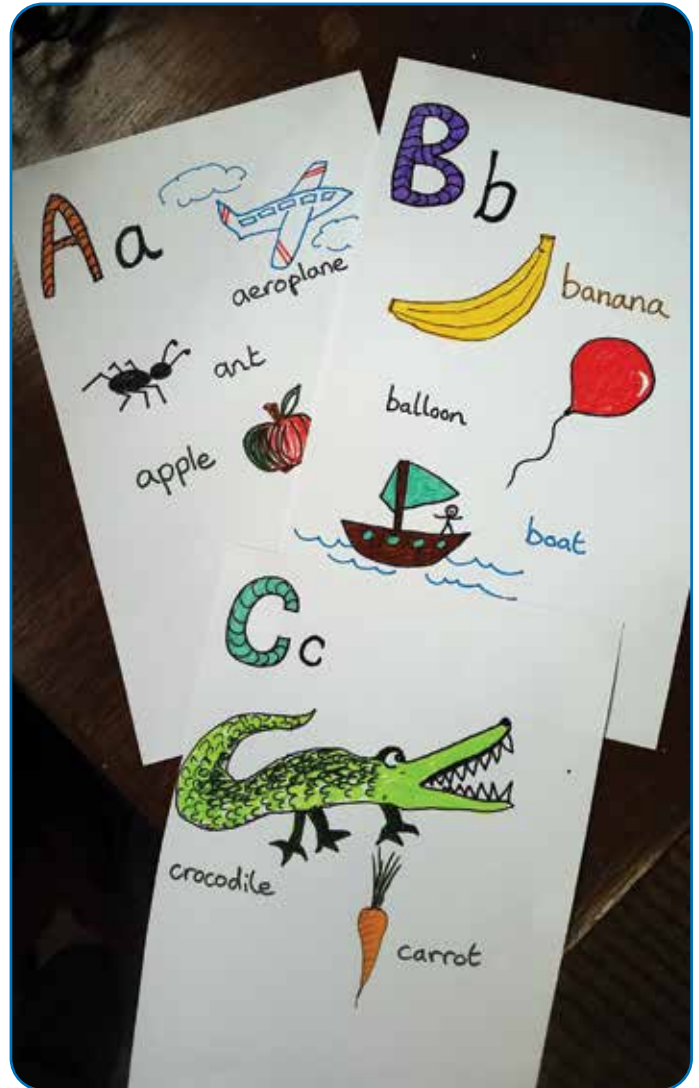
Polkare mii lutino en ma tel tic. Gin bimiyi ingeyo ka gitye kaniang, dok bene ka gitye ki miti me tiyo tic man nyo peke. Mii kony mot ento pe iket bura i kom lutino. Polkare konyo ka dano guye ni tic tek ci dong ginotte kacel me tiyo ne. Itwero wacco ni "Tic eni tek, pe kumeno? Watwero timmo ne kacel?"

Buk pi ABC

Omyero ibed ki: Kalam kalo (ma kala ne tye ka itye kwed gi), karatac, odok nyo libira kwoc ki wici

Gin ma myero itim:

- Nong karatac ki kalam kalo ma kala ne tye obed macok.
- Ibiyiko buk me nukta alpabet. Dol pot karatac. Ibimito pot karatac adi?
- Goo pulan kit ma imito goyo ki nukta magi. Acel i kom karatac acel acel? Aryo?
- Tam kit me goyo nukta mapatpat. Ibityo kwede nukta madongo? Nukta magi obibedo macal ki dano ma ojony? Ling gi ka kala nyo rangi tye.
- Coo nyig coc ma cakke ki nukta acel acel i kom karatac acel acel. Nyo imaro ni i goo cal jami nyo lee ma nying gi cakke ki nukta man?
- Yik ci bene goo cal nge buk man. Ket nyingi ingeye calo 'lacoc' (ngat ma ocoyo buk man).
- Dol buk man ci ikwa dano mo madit me kwoyo oguru buk man ki pic/libira ki wici nyo mwonno ne ki odok.



Tic mukene mameda:

- Kwan nyo mii ngat mo kwan iri ceko maping kany en.

Rucurucu ma tye i Ngom pa Alpabet/Nukta

Inino mo acel lutino rude aryo ma gin 'e' ki 'e' gumoko tam me lelo i kin gi. Dong kumeno gi donyo i kin nyig lok weng ma gi twero tammo ne. Guloko meli ('ship') odoko romo ('sheep') ci romo man odyak ki pii marac adada ci bene obange liweng cut. Gin bene guloko latin gweno ('chick') odoko lem ('cheek') ci min gweno obalo nino acel kulu yenyoy latine. Gin guloko rubbu ('stir') odoko dwoyo ('steer') ci obango latedo matek adada ma pe dong ngeyo ngo ma myero etim. Guloko lam mic (Will) odoko pangala pa mupira (wheel) ci dong en obedo ka lor dok i lung. Rude ginyero dok ginyero. Ento nukta mukene me alpabet pe guneno ni obedo ceko me yommo ic. I agikki rwot madako maloyo alpabet owaco kuman, 'Aya dong oromo.' Ci en oketo lutino rude man i kin ceer ('slip') ci ocwalo gin weng kanino (sleep).

- Itwero cakko ceko mamegi i kom Ngom pa Alpabet/Nukta?

Mwaka: Puramari

Kony bot ngat mutegi/omego ki lamego: Adyere

Gin ma ibi nongo ki i pwony man: En alpabet, dongo pa leb, nyig lok ki notto nyukta me coc wek oniang dano.

Gin ma ibitimo: Teddo wic, kubbe, ki yikko jami.

Yo mapatpat me timo tic man:

- Cak wer mo i kom alpabet man.
- Kwa dano mo mukene me konyi yikko buk man.
- Tii ki gweng matino nyo wii cupa me yikko en alpabet iwi meja nyo idye ot.

Ger/ yik ot mo ma odongo mabor

Omyero ibed ki: Kad makome tek nyo pulactik macon ma giboyo ki jami, bokci matino, gwenge ma opade

Gin ma myero itim:

- Kwany jami ma ter gi opadde mapol kit ma itwero nongo ne kwede. Magi twero bedo bokci macon, bokci ma tye ki laum wiye, buk, gweng matino ma tere opete, opoko pulactik ma tye ki laum wiye.
- Tem gero ot ki jami magi. Ngo ma in ineno i kom jami ma idodo iwii luwote? Jami madongo ne tye kwene? Ka iketo gin matidi itere en gin ma igero ni, ngo matimme?
- Gedo eni twero ceto marom kwene? Ngi ma miyo gedo mamegi cung nyo rette? Itwero jingo teko ne nining?



Mwaka: Puramari

Kony bot ngat mutegi/omego ki lamego: Bedo nok

Gin ma ibi nongo ki i pwony man: Ngeyo ketto jami atir, teddo wic me yikko jami.

Gin ma ibitimo: Temmo tiyo jami, teddo wic, kubbu jami ki bene ngeyo kany, kaca ki kuca.

Yo mapatpat me timo tic man:

- Peny dano mo mapat me konyi gero gedo man.
- Ka itye ki peko me neno tii ki jami ma gimulu amula me wek inong kit gedo ki i kom gin ma aaki imul.
- Ka itye ki peko me doddo jami matino, tii ki jami madongo ma dodde maber.

Ger yo ma kigingi tye iye

Omyero ibed ki: Kom, meja ki jami macel kwed gi, jami mogo madito calo bokci me kad nyo ngido bao, mupira macon, ki mukene.

Gin ma myero itim:

- Kigingi obedo jami mogo ma twero gengo kan ma myero in ibe iye ma myero iyit i kal wiye nyo idony ki itere nyo ingol arii. Twero mitto ni myero dano ngwec, pye, mol, yit ki legge. Itwero timmo ne mayot nyo matek kit ma imito kwede. Nen lapor ne ki i cal.
- Nong kan mo (i ot nyo woko) ma itwero ketto kigingi iye. Raa gaa me gero kigingi mamegi: lapor, ngido bao, gweng madito me ketto gweng ma myero ginyon, mupira ma macon, kom meja macon. Kong imok ki dano madit ka jami magi tye KAKARE ma pwud pe gicako tic kwed gi.



- Yik ki iger yo kigingo mamegi. Tam pi dano ma bitiyoyo ki yo kigingo man. Mii bed matek bot gi ento pe myero tic kwede oll gin!
- Tem kong tic ki yo kigingo mamegi – nyo tye kit gin mo ma imito lokko ne? Kwa ngat mo me pimmo kit caa ma tero me miyo in dokko yo kigingo mamegi. Itwero timmo ne ki cipid marom kwene?



Mwaka: Puramari

Kony bot ngat mutegi/omego ki lamego: Dano ma idyere dyere

Gin ma ibi nongo ki i pwony man: Yikko jami, gedo

Gin ma ibitimo: Teddo wic, cobbo peko, kubbu tic me jingo kom, ngeyo lapoka poka me kany, kaca ki kuca

Yo mapatpat me timo tic man:

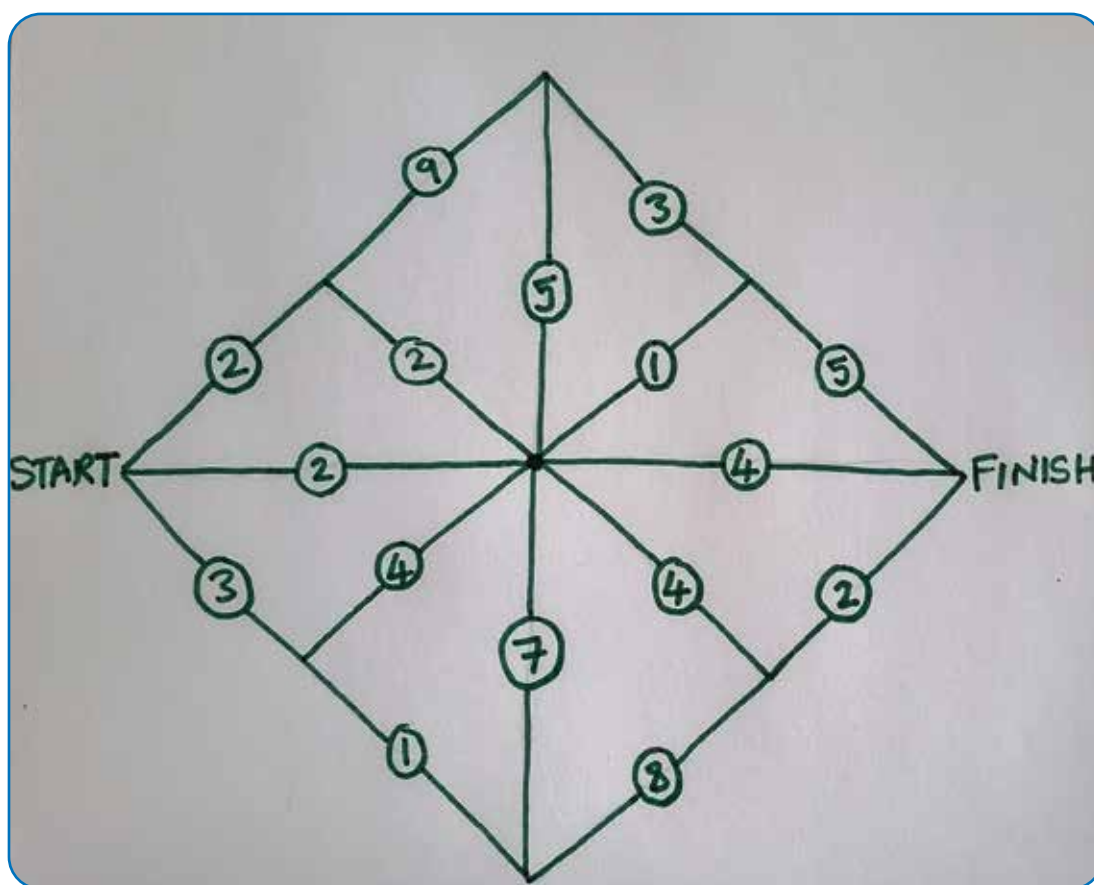
- Mii yo gigingo ni bed mayot pi dano ma tye ki goro me wot nyo ma tye ki goro me neno. Ket iye kit wot mo ma gitwero timmo ne, calo lor nyo mulu nyo jami ma gimako wek gi mul nyo gud kome ma giceto.

Calcumaze (400 cal yo oyo)

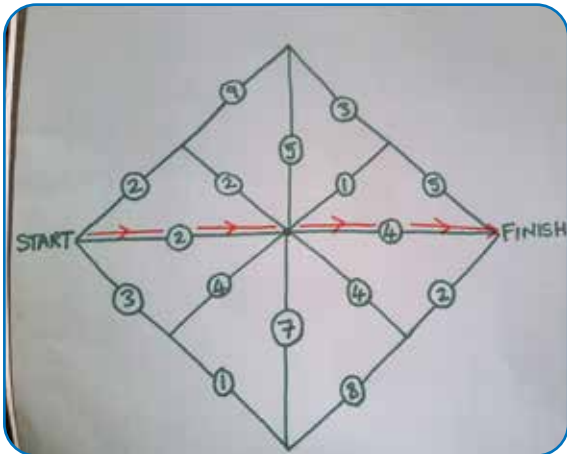
Omyero ibed ki: Kalam kalo/kalam, coka

Gin ma myero itim:

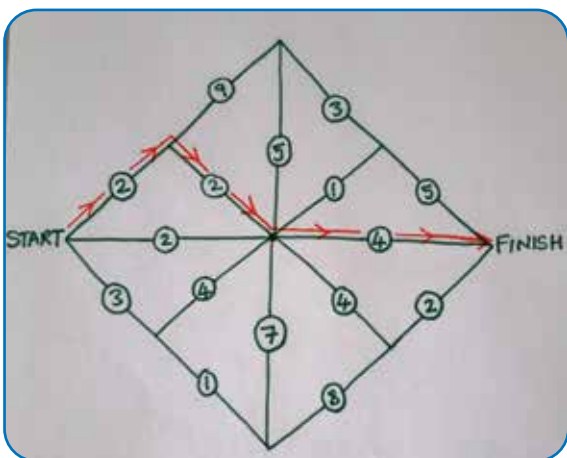
- Itwero koppo cal man i kom karatac mo nyo nong kamo malac ma itwero goyo cal man iye ki coka.



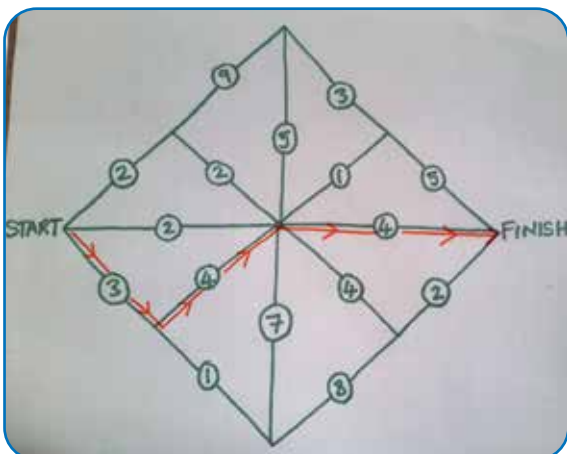
- Tuku man tye ma gituku ki nama me cura. I 'CAKKO' ne iceto ilubu layin wa 'TYEKKO'. Itwero lubbu layin ne atir nyo gotto ne tyam-tyam nyo kit mo keken ma ineno i layin.
- Ka ma itye ilubbu en layin man iwoto ki tiyo cura ma itiyo ki nama ma ikato ci iyi agiki i oo i nama me TYEKKO.
- Labolle en: Kit yo adii ma in itwero nongo ki nama cra 8?



1.
 $2 \times 4 = 8$



2.
 $2 + 2 + 4 = 8$



3.
 $3 \times 4 - 4 = 8$
 $(12) - 4 = 8$
 Lagam: tye yo
 adek mapatpat

■ Cik ma myero gilub en:

- ⊕ Yo acel acel myero bed mapat.
- ⊕ Yo mo keken myero pe ongol ka mo tyen ma kato acel.
- ⊕ Ka ikato nama mo ni myero iti ki lamed, lakwany ki/nyo lanyaa me meddo nama ni eni i kom cura ma itye ka tiyo.

- Itwero nongo yo matero dano wa i nama 10? Yo aryo matero dano i nama 16? Coo dong cura ma itiyu.
- Kit yo mene mukene ki nama ma ogiko ma in itwero yikko ne? Nama madit maloyo mene ma in itwero nongo ne? Nama mene matidi maloyo ma in itwero nongo ne? Kit nama me agiki adii ma in itwero yikko nyo nongo ne?

Tic mukene mameda:

- Mii bot dano mukene nama me agiki ci peny gin me nongo yo me agiki. Gin kare mukene gitwero nongo yo mapatpat ma in ongo pe itamo!
- Lok nama ma i kom goc ki nama ma megii. Nama mo keken twero tic ento pire tek me miyo bedo acel acel- nyodokko- nama dijit.
- Itwero bene tic ki nama ma ton tyo idyere nyo decimol me miyo gwenyo wii dano matek. Labol, $0.5 \times 4 = 2$ or $2.5 \times 5 = 12.5$.

Mwaka: Weng

Kony bot ngat mutegi/omego ki lamego: Adyere

Gin ma ibi nongo ki i pwoony man: Tiyo cura, lamed, lakwany ki lanyaa.

Gin ma ibitimo: Cobbo peko, tam matek, notte ki dano, lok ki dano.

Yo mapatpat me timo tic man:

- Yik yo manyweno wii dano idye ot ma itiyu ki coka ci 'nyik' ilub yo me miyo in poyo tiyo cura man maber.
- Mi nama ma tye i goc man bed 1-5.
- Nong yo mapatpat me aa i 'cakko' wa 'tyekko' ci kwan wel nama ma ikato (pe myero imed gin).

Tedo ki nama mapat-pat

Omyero ibed ki: Kalam kalo nyo kalam ki karatac, gin ateda, jami me tedo.

Gin ma myero itim:

- Mok tammi i kom gin ma imito ka teddo ne. Goo pulan i kom cam man ki dano madit nyo omego ki lamego madit ka imito akonya.
- Coo ping jami me konyo kor tedo (jami ma mitte pi tedo) ma omyero ibed kwede.
- Mok tam mamako dano adii ma imito tedo pir gi. Kit nyig cam adii ma imito pi tedo pi dano magi? Coo wel gin weng inget gin acel acel.
- Onongo welle bedo adii ka myero ited wel dano madoko man kiryo? Nucu wel dano magi? Dano aryo mukene ma gumedde?
- Kwany ga tedo mamegi ki jami tic me tedo(agulu nyo cupuriya) ka macok. Pim dong gin ateda.
- Lar lok mamako citep me tedo man ci bene coo ping citep magi. Tii ki nyig lok ma tito kit me tedo calo 'ngiddo', 'kullu', 'rubbu' ki 'nyotto nyo rubbu' bene.
- Lub citep acel acel me tedo man ci i lok bene ngec ma iketo ping icoc ka tic tye kaceto anyim, tem kitek me bedo matic tye kaceto macil wek dano mo keken olub kor tic mamegi.
- Ka dong ma tic tedo otum lwong dano ma gang dong gibin kacammo ngo ma itedo.
- Tam kit me pokko gin ma itedo me rommo cing dano weng ma tye. Kigiko adii/apude ma myero dano acel acel onong? Tere mo tye ma odong ma dano romo nongo ne?

Tic mukene mameda:

- Coo kit cam man maber wek dano mukene twero bedo ki kero me lubbu ne. Kwa gi me coyo kit cam magi ci wac bot gi kit ma ki ma ngec man tye ma olil kwede ki bene ka alokaloka mo tye ma gitwero lokko ne.



- Yer cam ma itwero pokko ne me yikki ngido, calo mugati kek nyo bicikut nyo ngollo nyig cam/yat me yikko nyig yat ma ginyobo/girubu. Ngid cura mapatpat ci coo gin ping (calo kit matye kwede i cal malo nu).
- Yik buk me wel cam ma imaro weng.

Mwaka: Weng

Kony bot ngat mutegi/omego ki lamego: Adyere / malo

Gin ma ibi nongo ki i pwoy man: Kwanno cura, tic ki cura, pimmo jami, goyo pulan pi yikko cam, dongo leb.

Gin ma ibitimo: Teddo wic, kubbu lok, cobbo peko, tam matut, kube.

Yo mapatpat me timo tic man:

- Kwa dano mo wek okonyi ki tedo.
- Ka iti oding nyo itye kipeko me winyo lok, itwero leb ma ginutu anyuta me yikko wer nyo wer ma gituku atuka.
- Itwero tukku wer i radiyo ci bene nongo nyig lok pire mapatpat.
- Itwero goyo agulu nyo doo kun dano mukene tye ka wer.

- ⊕ Lok adaa I kom cura: kwan adek adek, abiciel abiciel, aboro aboro ...
 - ⊕ Timo gin mo ki kom: wirre tyen adek, dong/goos wii (momot/pe malit) ki rwee ii kun nongo ikwano 1 naka 20.
 - ⊕ Coos nyig lok mogo ma dwon gi winye rom-rom ki canne pa lok bene ma weko winye lok ne bedo mwonya.
 - ⊕ Wer wer mo acel.
 - ⊕ Ngec makwako kom jami weng: nyut nying boma madongo loyo weng pa lobo mapat-pat abic ...
- Anga mabituku kwedi? Ngat acel mukene? Makato acel? Mii ki ngat acel acel gin mo matidi me tic kwede me wot I yoo.
 - Wun kacel ki lutuku mukene wuyee dok wumok cik mogo me aluba I kare me tuku, anga ma obucako? Ngo ma obutime kace ngat mo pe romo timo tic mo? Itwero lego kony? Itwero jalo kare megii? Ingee moko cik mamegwu me tuku enoni wutwero cako tuku dong.
 - Ket kat me 'tuku' manongo doge oume piny cok ki bod me tuku. Latuku acel acel obibolo mapecta [kit magibolo I tuku ludu matye ki nama I kome]. Gicoro gin tuku megii I kor kun nongo gilubu nama ma onen ingee bolo mapecta. Gicoro gin tuku megii I kor kun nongo I kwano wel cikweya I wel ma onyutte I mapecta.
 - Gigik kakwene? Tim ngo ma cikweya enoni tye kawaco. Kace gin ma itye kacoro enoni waco ni 'nong kad', kwany/tim tic ma oconne I kat enoni. Tim tic/ngo ma kat enoni tye kawaco. Kace latuku enoni pe romo, wudok wunen cik me tuku enoni. Latuku me acel ma o oo I agiki ne nongo oloyo.

Mwaka: 8+

Kony bot ngat mutegi/omego ki lamego: Adyere

Gin ma ibi nongo ki i pwoy man: Dongo pa leb, tiyo ki cura.

Gin ma ibitimo: Kubbu lok, notte, tamo matut, teddo wic (kati ki tam manyen).

Yo mapatpat me timo tic man:

- Wumakke wun aryo ki ladit me tuku.
- Wek tuku ne odok yot i yoo me kwanyo cen cikweya mo.
- Goo/coo yoo ki coka iwi kabedo ma kicweyo ki kidi ki ciminti wek iwot iwi 'bod/abam' me tuku enoni.

Itye kaneno ngo ma atye kaneno?

Omyero ibed ki: Kalam kalo onyo kalam ki karatac

Gin ma myero itim:

- Goo cal.
- Yoo ngeye, coo lok anyuta ma oloko I kom kit me goyo cal enoni.
- Leg ngat mukene olub lok anyuta meggi egoni labongo neno cal meggi ma igoyo.
- Kadong gutyeko timo meno, por cal egoni. Itamo ango? Gitye marom onyo pat-pat? Ngo manongo twero weko gibedo marom-rom maloyo meno?

Mwaka: Mwaki weng

Kony bot ngat mutegi/omego ki lamego: Bedo nok

Gin ma ibi nongo ki i pwony man: Dongo leb, coyo lok anyuta mapat-pat.

Gin ma ibitimo: Tedo wic (kati ki jami manyen), kubbe, kubbu lok.

Yo mapatpat me timo tic man:

- Wac lok anyuta awaca ki doggi me kaka coyo acoya.
- Tim ngo macal meggi tye kanyutyo.
- Yub/cwee 'cal' acweya ki olobo kulu onyo goo I kweyo/cilo.

Goo cal pa lee maleng adada

Omyero ibed ki: Kalam kalo me rangi onyo kalam ki karatac

Gin ma myero itim:

- Nong karatac ki kalam kalo obed atera, katwere bene rangi mapat-pat.
- Tam kong ni bura tye ki ume mabor calo pa lyec? Onyo gwok tye ki poke (calo pa okoro)? Twero nen nining?
- Goo cal lee mo kit ma in itamo kwede dok matye ki wat kom lee mukene mapat-pat. Coo nying wat kom lee enoni mapat-pat.
- Mii nying ki lee meggi maleng/mwonya enoni. Nying lee enoni twero aa ki I kom nying lee mapat-pat ma ibedo katic ki wat komgi I cal meggi.



Tic mukene mameda:

- **Tam kong:** En bedo kakwene? En bedo I ngom mamegwa ni onyo ingom mapat? Kit ngom mene? En camo ngo? Dwane tye nining? Woto nining? En onongo wat kom lee matung'-tung' enoni nining?
- **Bok / coo ododo** i kom lee enoni.
- **Kwan ododo matye piny kany** (onyo leg ngat mo okwan iri) wek omii onyo okel tam meggi cok.

Lalur gin ki Apwoyo

Lalur ocato pot dek I cuk ki apwoyo obedo kanyware I kare weng. 'Pe iromo ka ngwec madwir kit ma an angweco, itwero? Apwoyo onywaro. 'Dong itii dok wangi bene pe neno maber.'

Apwoyo omyel inget Lalur ma obedo katemo me make ento onongo pelarre. Apwoyo ongweco kun nongo onyero.

'Abinyute kita' Lalur otamo I nino mo acel. Dong ocako ka poro odenge ni rwenyo pa neno pare dong tye kamede ameda dok ocako karuku kiyo.

Gero, tekcwiny ki lit wic pa Apwoyo obedo kamede ameda dok Apwoyo obedo kamede ameda ki coro cok I kom Lalur ki anywar ki lit wic mege. Dong I nino mo acel, Lalur oketo woko lwete ka omako Apwoyo ki ite. Pe romo weko ni Apwoyo olwii. Lalur obedo kaporo odenge ni ebucamo Apwoyo ki ite. Apwoyo obedo ka twenye ki yenge ento Lalur omede ki wiro Apwoyo malo piny ki ite. It Apwoyo omede ameda ki doko bor wang ma I agiki ne, ki kero Apwoyo otelle naka olwii ki I lak Lalur (Lak Lalur ma otii ni nongo dong pe tek tutwal). Apwoyo oringo madwir kit ma eromo cen ki I cuk, cen ki I boma, cen ki inget Lalur. Dong pi tyen lok enoni aye oweko ineno it Apwoyo dong tye mabor.

Mwaka: Puraimari

Kony bot ngat mutegi/omego ki lamego: Bedo nok

Gin ma ibi nongo ki i pwony man: Kit kom (cep) ki rangi, tic ki leb me tito jami atita.

Gin ma ibitimo: Tedo wic (kati ki gin manyen), kubbe.

Yo mapatpat me timo tic man:

- Tit lok mo I kom lee enoni, nyut ki ngat mukene wek ogo cal enoni.
- Tii ki lobo kulu onyo cupa ki gin mo me gwoko/kan cam me yubo lee enoni.

Goo cal pa boma madit kit ma itye katamo atama iwii ni

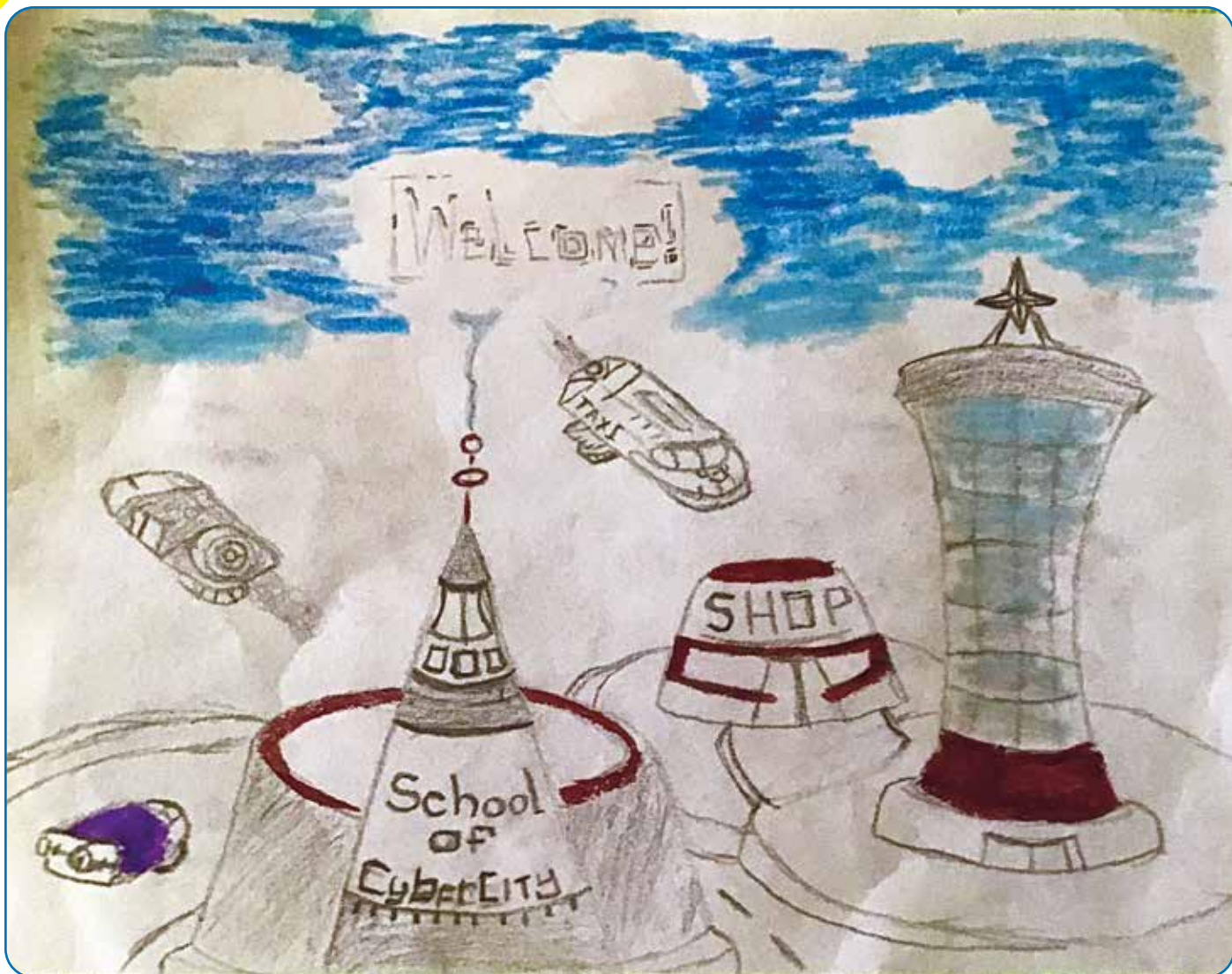
Omyero ibed ki: Karatac ki kalam kalo/ kalam kalo matye ki rangi

Gin ma myero itim:

- Bed ki karatac madit ki kalam kalo weng atera.
- Leg ngat mo okwan jami magi ki dwan malongo dok momot wek imii wangi wek icak tamo.

Mii wangi ka icak tamo I kom boma megii madit: Tam kong ni itye kawot I teng gudu me boma megii madit . Boma megii madit enoni nen nining? Gedo mene ma boma caanini tye kwede? Odi ne giboco marom men? Kwai jami wet mene matye kunu. Boma enoni obedo boma ma alum-alum matye ki yadi kacel ki kabedo malac makiketo me namo ki galo wang? Onyo boma enoni tye ki jami manyen mapol ataa macalo mutoka matuk-atuka iwi yamo? Ting kare mo manok me tamo kong I kom boma megii madit enoni.

- Yab wangi, goo cal pa boma megii. Goo pulan I kom kama odi obubedo ie ki ngo ma omyero giket. Cak ki goyo jami mukwongo mapigi tego kadong ityek ki mukene. Tii ki rangi kace twere.
- Nying mene ma ibimiyo ki boma megii?
- Nen boma megii odoco. Wii owil ki gin mo? Kabedo me lega? Gedo mo macon mapire tek? Kadong kulu ki kabedo me tuku kono? Dano twero woto I dye boma enoni maber labongo ayela/peko mo? Kadong lungolo kono? Wek boma megii obed dit me medo jami egoni.



Mwaka: Puramari

Kony bot ngat mutegi/omego ki lamego: Adyere

Gin ma ibi nongo ki i pwoy man: Dongo leb, kwan manyuto dit pa kabedo i mep/cal lobo, kit ma boma madongo tiyo kwede.

Gin ma ibitimo: Kato ki tam manyen, goyo pulan, yiko, tyeko peko.

Yo mapatpat me timo tic man:

- Nyut ki ngat mo ngo ma myero gugoo iri.
- Ger boma megi ki bokci ma jami peke ii e, olut ki kidi.
- Goo cal pa caro ma polle pur aye time ie onyo boma matitidi kaka boma madit.

Jami macwinyi maro

Omyero ibed ki: Kalam kalo onyo kalam ki karatac ki rangi bene mapat-pat

Gin ma myero itim:

- Ket cingi I dyere pa karatac ka igoo cal cingi (icoo inget lwet cingi weng).
- Kama nyig cingi madit tye ie ni, coo nying rangi ma cwinyi maro loyo weng. Ibiwero ne bene?
- I kabedo ma lwet cingi mukene tye I igi ni, coo nying cabject ma imaro I gang kwan, cam ma cwinyi maro loyo weng, tuku ma imaro loyo, ki dong lee ma imaro loyo weng.
- Dee kabedo mukene ma odong ni ki cal pa jami ma cwinyi maro!



Tic mukene mameda:

- Kat ki nying jami mapat-pat me acoya I nyig cingi mapat-pat, magi twero bedo jami mukene ma cwinyi maro onyo dul pa nyig lok mukene macalo nying boma madongo me lobo mapat-pat, jami macalo meja ki kom me ot meg, jami ma imaro timo ki jami mukene mapat-pat.



Mwaka: Puraimari

Kony bot ngat mutegi/omego ki lamego: Bedo nok

Gin ma ibi nongo ki i pwony man: Dongo leb

Gin ma ibitimo: Tedo wic/kato ki gin manyen, kubbe

Yo mapatpat me timo tic man:

- Leg ngat mo mukene ogo cal pa nyig cingi (occo i nget cingi).
- Wac ki ngat mo jami ma imaro ki dok leg enocco iri jami egoni.
- Tam i kom jami mukene macwinyi maro ma omyero gicoo bene.

Wek yeya megi opye iwi pii

Omyero ibed ki: Gin mako jami ma mupira-mupira madong gitiyo kwede onyo cupa, karatac onyo bongo, kidi

Gin ma myero itim:

- Nong gin mako jami ma mupira-mupira madong gitiko tic kwede me bedo calo yeya megi. Yub yeya megi, ibitweyo bongo i kome?
- Wek yeya megi opye iwi pii matye I baket onyo pii mo matidi makitongo atonga? Ber pa pye mege iwi pii tye nining? Itwero weko yeya enoni woto iwi pii?
- Cok kidi mogo. Twero yeyo kidi adi labongo lwiny?



Tic mukene mameda:

- Itwero yubo yeya aa ki i kom jami mapat? Laporre karatac? Man twero loko wel kidi ma etwero yeyo?

Mwaka: Puraimari

Kony bot ngat mutegi/omego ki lamego: Bedo nok / adyere

Gin ma ibi nongo ki i pwony man: Cayanc (physics), Pek pa jami

Gin ma ibitimo: Tedo wic (Kato ki jami manyen), kubbe, yubu

Yo mapatpat me timo tic man:

- Temo koc onyo jami mapat-pat me neno kace gi pye iwi pii onyo lwiny.
- Tim tic man nongo pud itye i ot lwok onyo i bap me lwoko jami i ot tedo.

Cito I cuk

Omyero ibed ki: Jami me 'acata' iwi pem meggi matidi me cuk, kalam kalo ki karatac, kidi onyo gin wii cupa mapol

Gin ma myero itim:

- Nong kabedo mo me keto pem meggi me cat I cuk me kikwangala. Man twero bedo meja mo matitidi onyo kabedo mo keken I dye ot meno.
- Mok tam I kom ngo ma ibicato I iwi pem meggi enoni. Cam? Bongi? Buk? Onyo kwai jami mapapat
- Nong jami me acata iwi pem meggi me cuk. Peny ladit/dano ma otegi onyo omero/lamero madit kace obedo ber me kwongo ki miyo den ki dano. Mukene itwero tic ki kidi, jarara, gin wii cupa, oboke, olut weng macalo jami me kikwangala me acata.
- Tii ki kidi onyo gin wii cupa macalo cente me kikwangala. Nong bokci mo matitidi ka igwok cente enoni I ie. Wel karatac ki kalam kalo adi madong tye atera wek inge wel ma ibingolo.
- Com pem meggi. Can jami maber dok I yoo maneno ne mit tutwal. Coowel jami I karatac mapat-pat ka iketgi cok ki ngo ma itye kacato iwi pem meggi.
- Anga ma obubino I dukan meggi? Omero/lamero? Lugangi? Yab dog dukan meggi ka ijol luwil I ot.
- Wek obed macalo tuku goga mamit I yoo me neno ni I kare mo pe ibedo ki jami madano mito. Mii jami mukene me kaka ngo magitye kamito. Onyo ngol wel matek ka iwac ki lawil tyen lokke. Giyee/cwako medo wel enoni?



Mwaka: Puriamari

Kony bot ngat mutegi/omego ki lamego: Adyere

Gin ma ibi nongo ki i pwony man: Lamet ki Lakwany ki timo kwan pa wel me ajwika, leb me wil ki cat.

Gin ma ibitimo: Kubbo lok, poro lok, notte (tic ki dano kacel), kato ki tam manyen, tyeko peko.

Yo mapatpat me timo tic man:

- Tic ki omezo/lamego onyo ngat ma otegi me coyo wel jami i karatac.
- Wubed ka loke aloka ki ngat mo mukene me bedo lacat i dukan ki lawil.

Nyig lok adi ...?

Omyero ibed ki: Kalam kalo onyo kalam ki karatac

Gin ma myero itim:

- Coo lok man I leb munu 'Learning at home is fun'.
- Nen wel nyig lok adi me leb munu ma iromo kato kwede ki I kom lok enoni ka icoo lok egoni piny, me lapor: **Learn, ring, mat, lama, night.**
- Itwero coyo lok mogo I leb munu kun nongo itiyo ki nyig lok ma icoyo egoni?
- Tam kong I kom lok mogo I leb mamegi ka inen wel nyig lok adi ma iromo kato kwede. Twero bedo lok marom onyo mapat bene.
- Nen lok me leb munu matye kabino matiyo ki nukta weng manonge I leb munu: 'The quick brown fox jumps over the lazy dog.'
- Itwero coyo onyo kato ki lok mogo I leb megi matiyo ki nukta egoni weng? Nyig lok adi mapat-pat ma itwero kato kwede ki I kom lok megi enoni?

Tic mukene mameda:

- Kat ki tuku mo me nyig lok kun nongo itye ka tic ki nyig lok egoni. Kat ki ododo mo macek kun nongo itye katic ki nyig lok manyen egoni ka icoo ododo enoni acoya.

Mwaka: Mwaki weng

Kony bot ngat mutegi/omego ki lamego: Bedo nok

Gin ma ibi nongo ki i pwony man: Coc, nyuto nukta ma nonge I nyig lok, kit ma iyubo/ikato kwede ki lok ma iloko.

Gin ma ibitimo: Penyo jami, cano jami me acata, tedo wic/kato ki jami manyen.

Yo mapatpat me timo tic man:

- Goo cal kaka coyo nyig lok acoya.
- Wac ki ngat mo nyig lok megi mapapat wek ocoo iri.

Kace onongo atye ladit lobo ...

Omyero ibed ki: Kalam kalo onyo kalam ki karatac

Gin ma myero itim:

- Kong itam ni in aye itye ladit lobo me lobo ni. Gin ango ma ikwongo ki loko? Ngo ma ibitimo makwako kom jami magi:
 - ⊕ Kwan (me lapor; gangi kwan ki lupwonye)
 - ⊕ Cwec ma orumuwa (me lapor; gwoko cwec pa rubanga)
 - ⊕ Yot kom (me lapor; odi yat, daktari ki nac)
 - ⊕ Wot (me lapor; kit ma dano woto kwede I kin piny)
- Tye dul pa dano mogo ma imito konyo? Gin anga gi? Ibikonyo gi nining?



- Coo lok magi ka ityekgi ki lok mamegi giri.

Ka onongo atye ladit lobo... lacoc (nyingi)

Ka onongo atye ladit lobo me (nying lobo megi), onongo
abi.....

ki bene abi.....

Nongo obedo tye.

Onongo abingolo

Onongo

Pe obumede matwala.

Onongo abuneno ni

Cing: _____

Mwaka: Mwaki weng

Kony bot ngat mutegi/omego ki lamego: Bedo nok

Gin ma ibi nongo ki i pwony man: Dongo leb, loko lok kit ma oporre ite cik me leb enoni.

Gin ma ibitimo: Tedo wic (kati ki jami manyen), tamo matut, kubbe i lok, loko i nyim lwak.

Yo mapatpat me timo tic man:

- Leg ngat mo okonyi ki coyo lok megi.
- Goo cal pa jami ma imito loko.
- Tam kong ni in aye itye rwot me caro, meya me kabedo mo onyo lacung iwi bye i tederu.
- Wac ki lugangi ni me penyo in lapeny ka in i gam macalo ladit lobo.

Lok ki/peny ngat mo ma otegi

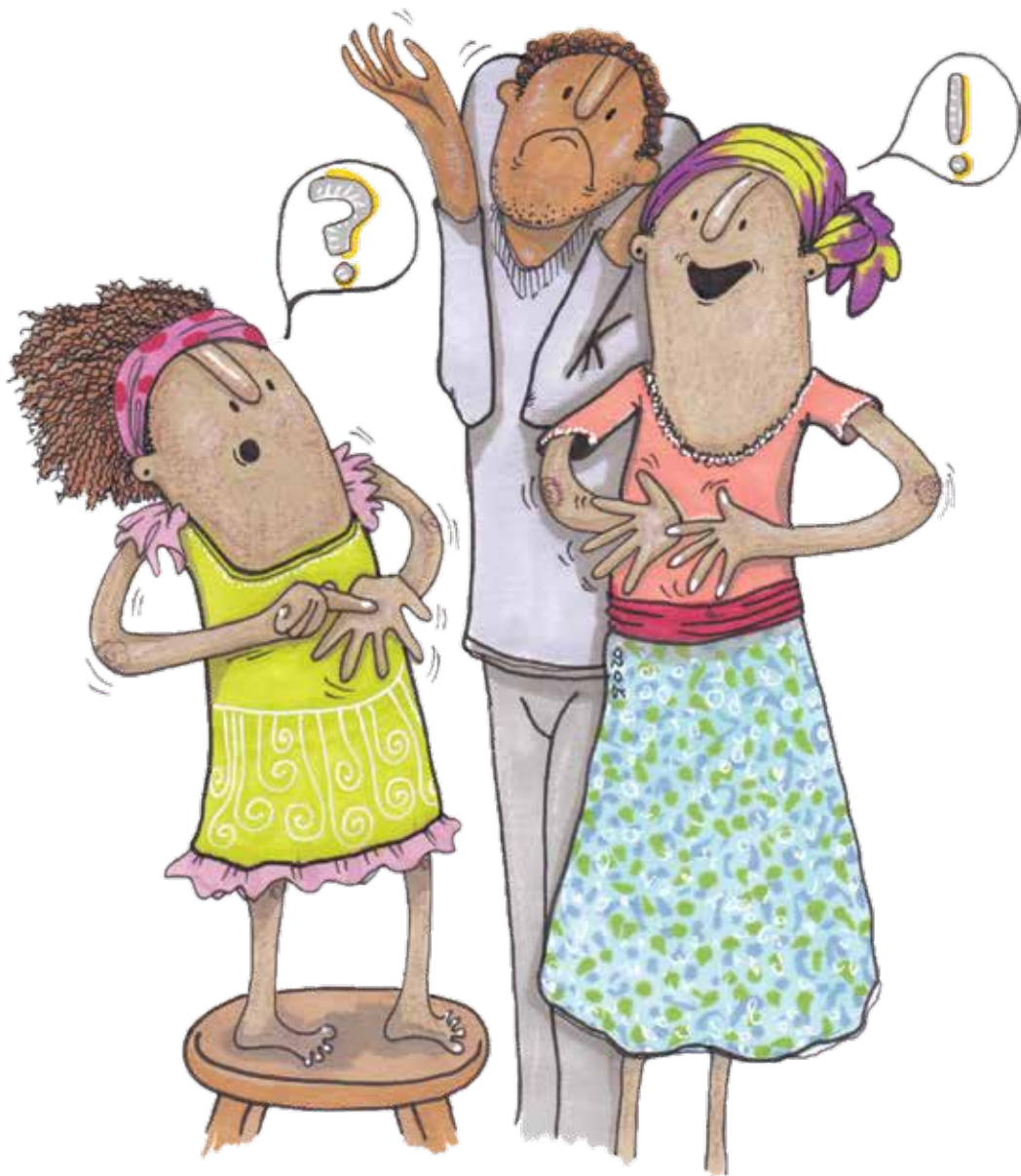
Omyero ibed ki: Kalam kalo onyo kalam ki karatac

Gin ma myero itim:

- Tam I kom ngat ma otegi ma yomo cwiny dano tutwal ki lokke ma imito lok kwede/penyo. Twero bedo ngat mo me gang megwu onyo I caro/kabedo ma ibedo ie.
- Ngo ma weko dano enoni bedo lagoga/layom cwiny dano tutwal? Ngo ma imito penyo/ loko I kome? I kom tino onyo kare manongo pud gitino? Aloka-loka ma guneno? Ngec ma gitye kwede onyo ngo ma gingeo maber?
- Coo lapeny ma imito penyo egoni weng acoya. Nen lapeny egoni weng ka iter gi kit ma imito gubed kalubbe kwede I kare me peny/ lok.
- Tem kong kapwonye I yoo me penyo/lok ki ngat mukene mutegi onyo omero/lamero madit. Man bikonyi me neno kace mitte ni omyero I lok jami mo. Ngat ma ibedo kapenyo otamo ni iloko/itere maber tutwal? Oloko ma oketo cwinye labongo tuku? Gubedo kamito kare mukene me medo lok mukene?
- Lok jami mogo ma itamo ni mito aloka ingee pwonye Lapeny mukene pud mitte? Omyero ijwik lapeny? Imito loko lapeny mo?
- Peny/lok ki dano enoni. Pwoo ngat ma iloko kwede enoni pi kare mege (ma omii).

Tic mukene mameda:

- Coo jami ma olokke weng i kare me lok ki dano enoni wek kipok ki lwak iwi redio ki/onyo i gajeti me tederu enoni.



Mwaka: 8+

Kony bot ngat mutegi/omego ki lamego: Bedo nok

Gin ma ibi nongo ki i pwony man: Dongo leb, pwonyo lok macon me kom gang onyo caro/kabedo

Gin ma ibitimo: Kubbo lok, yubbe pi penyolok ki dano, tamo matut.

Yo mapatpat me timo tic man:

- Leg ngat mo me penyolok kwedi kong me acel wek ingee ngoo ma omyero i peny.
- Coo lapeny weng i nukta madongo wek onen maber.
- Wek lapeny weng obed macego-cego wek poo iwigi obed yot.
- Leg ngat ma ibipenyono enoni me miyo lagam mege i lok macego-cego wek coyo ne bene obed.

Yub Cuma (jami tic onyo cuma)

Omyero ibed ki: Kalam kalo onyo kalam ki karatac

Gin ma myero itim:

- Tam I kom Cuma (jami tic onyo cuma) ma imito yubu. En cuma enoni timo ango? Gwok nyo twero timo gin mo matwero konyo dano? Itwero wat kwede [I komi] kiyubbo ki ngoo? Cuma enoni tiyo ki mac alengtwic?
- Goo cal pa cuma meggi kadong icoo nying wat kome mapat-pat. Tic pa wat kome mapapat egoni obedo me ngo?
- Coo lok mo I kom cuma meggi. Itwero tito kit ma tiyo kwede?

Tic mukene mameda:

- Yub cuma/jami meggi ki I kom yugi/jami madong gitenyo. Me lapor, nong bokci onyo cupa me mupira madong gitiyo kwedgi. Coo I wat kom cuma/jami ma iyubo enoni mapat-pat kace imito timo kumeno.
- Yub lok mo I kom cuma/gin ma iyubo enoni maweko gicopo wilo ne oyoyot. Kacat ne tye kwene?



Mwaka: Puraimari

Kony bot ngat mutegi/omego ki lamego: Bedo nok

Gin ma ibi nongo ki i pwony man: Dongo leb, coyo coc, notto nukta me coc wek coc oniang dano.

Gin ma ibitimo: Tedo wic (kati ki jami manyen), tyeko peko, tamo matut, kubbo lok, ngeo kabedo ma orumi.

Yo mapatpat me timo tic man:

- Leg ngat mo ogoo ni cal.
- Yub en cuma megi ni ki lobo kulu.
- Leg ngat mo wek ocoo iri nying wat kome mapat-pat.

Yubo jami ki I kom yugi/jami madong gitenyo

Omyero ibed ki: Jami ki gin boyo jami madong gitenyo

Gin ma myero itim:

- Cok jami ki gin boyo jami madong dano gitenyo. I kin magi twero bedo cupa ma mupira madong gitiyo kwedgi, wii cupa, bokci me kabad ma dit gi papat, kavera me boyo jami, bongo ma otii ki jami mukene mapol.
- Ki bene yeny cwec ma orumuwa ma itwero tic kwedgi kacel ki yugi onyo jami madong dano otenyo me yubu ngo ma in imito, me lapor olut, kidi, oboke ma otwoo, onyo kadi lobo kulu onyo daba.
- Tam I kom ngo macwinyi mito yubo. Gin tuku pa lutino? Gin enoni tye ki tyene [kace mutoka]? Onyo kagwoko lee? Ki cel ne bene? Tam I kom kit ma imito jami ma imito yubo enoni onen kwede.



- Goo cal pa ngo ma imito yubo ne ki kit ma imito onen kwede kadong icak neno ngo ma omitte me yubo ne.
- Yub ngo ma imito yubo.
- Nen ngo ma iyubo ni doki maber. Itwero yubo wek obed matek dok onen maleng ningi? Ngo matwero weko doko matek? Matwero konyo woto maber?



Mwaka: Puraimari

Kony bot ngat mutegi/omego ki lamego: Bedo nok

Gin ma ibi nongo ki i pwoy man: Kati ki kit ma jami ayuba twero nen kwede, yubu cuma, gedo.

Gin ma ibitimo: Tedo wic (kati ki jami manyen), tyeko peko, kubbe, ngeo kabedo ma orumi.

Yo mapatpat me timo tic man:

- Leg ngat mo wek okonyi ki yubu jami ma imito yubbo.
- Wek ngo ma imito yubu ni pe obed ma yubbo ne tek tutwal – yub agulu ma kodi me deyo dye kal bedo ie, gin mo mawirre awira, onyo tuku me kwano wel.

Coyo nying jami

Omyero ibed ki: Pencil or pen and paper

Gin ma myero itim:

- Kalam kalo onyo kalam ki karatac
 - ⊕ Nying wer ma imaro
 - ⊕ Nying yadi me kabedo enoni
 - ⊕ Jami maweko cwinyi bedo yom
 - ⊕ Jami ma ingeo timo ne maber adada
 - ⊕ Nying jami ma imito pi lugang meggi
- Tem kacoyo nying ma pe obedo jami 'macalo jami ma itye ki pwoc madit I komgi' onyo 'jami ma timogi yomo cwinyi'.
- Yer acel ka icoo nying egoni piny.
- Itwero poko nying ma icoyo egoni wek odwog matitino/nonok? Me lapor, itwero poko nying yadi/kodi me kabedo meggi I dul ma yadi ma nyiggi camme ki ma pe camme.

Mwaka: Mwaki weng

Kony bot ngat mutegi/omego ki lamego: Bedo nok

Gin ma ibi nongo ki i pwony man: Dongo leb, coyo coc, notto nukta me coc wek oniang dano

Gin ma ibitimo: Penyo jami, cano jami me acata, tedo wic/kato ki jami manyen

Yo mapatpat me timo tic man:

- Leg ngat mo wek ocoo piny nying dano iri.
- Coo nying jami ma obedo meggi.
- Cok jami 10 mapapat ma nonge i dul acel. Jami weng ma aa ki i poto? Jami weng ma aa ki I ot tedo? Leg ngat mo wek ocoo nyinggi iri.

Goo cal/mep me kabedo megi

Omyero ibed ki: Kalam kalo onyo kalam ki karatac, jami me ateda, jami me tedo

Gin ma myero itim:

- Yub karatac ki kalam kalo mo obedo atera, ma rangi gi pat-pat kace twere.
- Tam kong ni itye kawot I kin piny I kabedo/caro megi. Itye kaneno ngo? (Odi, gedo ki gudu ento bene yadi onyo jami mogo mapigi tego macalo kanica/kilejia, ot lega pa icilam onyo bar tuku mapapat.)
- Tam kong I kom kit ma gudu mukene bor kwede, kit ma yadi ki odi mukene boco kwede. Kadong kabedo matwolo macalo bar ki tim? Cuk? Gang kwan? Jami mo keken mukene ma itwero tamo I komgi.



- Mok tammi I kom kit ma ibigoyo kwede cal/mep megi. Ibiwero jami mapapat bene? Ibigoyo [mep enoni] weng? Ibiketo alama mapat-pat me nyuto jami mukene bene (macalo rek ma ogom-ogom calo yamo ma woto I wii pi, twod matye ki rangi ma alum-alum macungu pi yat)?
- Karatac megi omyero obed dit rom mene? Pot buk acel? Aryo?
- Jami acel acel egoni myero ditte onyotidi ne obed rom mene? Dit pa gang kwan, bar tuku, gudu onyo yoo, cuk weng obedo rom mene?

- Goo cal pa kabedo/mep. Coo nying kabedo mapat-pat onyo ket alama woko ka icoo nying I kom alama egoni.

Tic mukene mameda:

- **Tam kom:** Ngat mo manyen tye kapenyo yoo me cito I cuk onyo nam tye ie. Coo onyo wac ki dogi kit me oo kunu. Nong ngat mo wek onen cal/mep meggi ka ipeny ngat enoni kit me oo I kabedo mo.
- **Bok / coo ododo** I kom kabedo mo manonge I caro enoni. Awene ma gang kwan enoni ocakke ie? Bar tuku ocako bedo kenyo cako wa con? Manaka yam peko mo mapoto atura macalo pong pa pii onyo yamo matek mabalo jami otimme I kabedo enoni? Kadong kwer kono? Lok macon mo mapire tek makwako kom kabedo enoni tye. Ododo mo makwako kom cen I kabedo enoni tye?
- **Yub kit ma kabedo enoni myero onen kwede.** Tii ki jami me boyo boc kacel ki bokci matino-tino ma otii ma itwero nongo. Itwero yubbo I yoo mo ma kadi ngat ma wange peke bene twero mulo amula ci nongo yoo? Tic ki tol twero konyo.

Mwaka: Mwaki weng

Kony bot ngat mutegi/omego ki lamego: Adyere / malo

Gin ma ibi nongo ki i pwoony man: Dongo leb, nyig lok pi kabedo mapat-pat, leb me nyuto kabedo, kabedo me tederu, kabedo ki jami mapigi tego i kabedo enoni.

Gin ma ibitimo: Tedo wic (kati ki jami manyen), kubbe, coyo kwan manyuto dit pa kabedo i mep/cal lobo, bedo/keto jami kakar gin mo, ngeo kabedo ma orumi, neno.

Yo mapatpat me timo tic man:

- Tit kit ma kabedo enoni nen kwede ka iwac ki ngat mo ogoo cal kabedo/mep.
- Yub kit ma kabedo enoni myero onen kwede ayuba kaka goyo cal/mep pa kabedo enoni.
- Goo pulan me ot meggi onyo tyelo acel manonge i ot enoni.
- Bok ododo mo i kom kabedo ma ibedo ie ka i leg ngat mo ocoo piny.

Yub gin tuku ki cokci

Omyero ibed ki: Cokci macom, makilwoko maleng dok maber, kalam onyo coka madit, jarara mapol ma otii, libira, wuci ki magic, yer romo/pama.

Gin ma myero itim:

- Nong cokci macon mabor. Rwak cingi ie ka iket cingi I alama pa nukta C ki nyig cingi madit kacel ki nyig cingi mukene egoni weng. Ket nyig cingi madit kama opuny donyo I I cokci tuk kwede wang ma dong icako nongo onyo tye kanen calo wic ki dog.
- Tii ki kalam onyo coka me coyo/nyuto kama wange obedo ie. Kwany coka enoni cen. Goo cal pa wang aryo onyo kwoo jarara kama iketo ie alama me wang.
- Med yer romo macalo yer wic. Me timo man, ngol yer romo I dongo/bor marom ka itwee doggi I dyere. Kadong ikwoogi I kom cokci enoni, malo I wii wang.
- Dee gin tuku magiyubo ki cokci enoni. Miye otok onyo tii ki bokci onyo bongo me yubo dogge.
- Mii nying ki gin tuku ma i yubo ki cokci enoni ki dong pwony kit me weko gin tuku ma iyubo ki cokci enoni wek 'oloki'. Wek onen mapat dok manyayo nyero onyo ki cwer cwiny I yoo me coro cingi. Wek onen macalo tye ki ngeng I yoo me laco kin wange aryo onyo tye ki cwer cwiny I yoo me coro wange aryo weng cok.

Tic mukene mameda:

- Yub gin tuku mukene ki cokci ka iwek 'gulok' I kinggi? Gubedo angagi? Ngo magimaro timo? Wek lugang meggi gunen tuku pa gin tuku magiyubo ki cokci.



Mwaka: Puramari

Kony bot ngat mutegi/omego ki lamego: Adyere

Gin ma ibi nongo ki i pwony man: Goyo cal, loko lok i kin dano, dongo leb.

Gin ma ibitimo: Kubbe, tedo wic (kati ki jami manyen), nongo jami maromo konyo tic/tuku kace jami ma onongo mitte peke.

Yo mapatpat me timo tic man:

- Leg ngat mo okonyi ki deyo gin tuku megi.

Mancala onyo tuku mo me kwan marwatte ki man

Omyero ibed ki: Kidi, muranga onyo nyig kodi

Gin ma myero itim:

- Tuku me kwano nama mene mawutye kwede I lobowu? Wutye ki tuku mo magituku ki kidi, nyig muranga ma otwo, nyig kodi onyo gin mo mukene makwanne ki tuku mi bod (marom/rwatte ki maginyuto I cal piny kany)?
- Wutuku tuku ne nining? Ingeo cik me tuku enoni? Ka pe ingeo, itwero nongo ngat mo matwero pwonyi?
- Kace wupeke ki bod, itwero coyo bod enoni acoya piny I ngom? Itwero kwinyo bur I ngom ka icoko kidi wek itii kwede.
- Tuk tuku ne. Kace mito lutuku aryo ci myero I yenyo ngat mukene wek ituk kwede. Ngo maweko tuku enoni bedo tuku maber?





Tic mukene mameda:

- Itwero coyo cik me kom tuku megi enoni? Tam kong ni cik enoni obedo pi ngat mo manaka pud pe otuku tuku enoni.
- Itwero kanongo tuku me kwan mukene manyen? Pwony ngat mukene bene kit me tuku tuku megi enoni. Cik me tuku enoni obedo ngo?

Mwaka: Mwaki weng

Kony bot ngat mutegi/omego ki lamego: Bedo nok

Gin ma ibi nongo ki i pwony man: Kwano cura, dongo leb (nyuto/cik me aluba).

Gin ma ibitimo: Winye/tic kacel, tyeko peko, kubo lok, kati ki pulan onyo kit me tic.

Yo mapatpat me timo tic man:

- Kace kwanyo jami matino obedo tek, tii ki kidi madongo-dongo.

Neno cwec pa rubanga

Omyero ibed ki: Kalam kalo onyo kalam ki karatac

Gin ma myero itim:

- Kat woko ka imok tami I kom ngo ma imito neno. Twero bedo anyayi macalo opyen matye kagedo oboropyen onyo kalang matye kayeyo cam I doge. Twero bedo gin matuk atuka, winyo onyo kic matye kacoko cam. Onyo neno yat ki tipu ne ma yamo tye kayengo. Onyo dero matye iwi pii me kulu.
- Nen pi kare ma olo oo dakika apar wie abic onyo makato ki bene coo jami weng ma itwero. Nen kit ma woto kwede, alama onyo rangi mo kace tye (rangi mo maryeny dok nen ki bor onyo rangi ma weko panne dok rwenyo I kin piny). Itwero tito kit ma nen kwede?
- Penynye kekeni lapeny mukene: Dit rom mene? Tye ki tyene adi? Woto nining? (madwir, mot, I yoo mapat, I yoo maber dok mwonya.) Obucito kwene? Ngo matye I nyime, ngo ma en tye katemo timo ne onyo yubo. Anyai/lee mukene macalo en bene tye cok? Ngo magitye katimo?





Tic mukene mameda:

- **Goo** cal pa ngo ma ineno obedo katimme.
- **Nong/yeny** ngec mukene makwako kom ngo ma ineno. Peny ngat mo matye ki ngec I kom jami egoni ki bene tam I kom lapeny ma myero ipeny kwede dano enoni. Lee/ anyai enoni camo ngo? Kwai lee/anyai enoni tye adi? Ginongo cam nining? Gikwo mapol I dul onyo man I wiye kene? Ginywal nining? Gikobo I kabedo mukene bene?
- **Buk me kom cwec ma orumuwa.** Man twero bedo karatac ma icyo ie onyo igoyo ie cal pa jami ma ineno nino ki nino. Kace itwero neno jami marom enoni pi nino mapol (calo tipu ma yat kelo onyo ature ma oyabbe onyo pii me kulu, ci inen apoka ma obedo tye I nino egoni acel ki acel).
- Anyai mapat-pat bino kalimo ature enoni? Ka yat enoni kono. Winyi bene bino kalimo onyo oboke ne tye kaloke? Gitye kadongo? Kadong kulu ni kono? Tye rec onyo anyai mapat-pat I ie onyo ingete? Rangi pii enoni lokke?



Mwaka: Mwaki weng

Kony bot ngat mutegi/omego ki lamego: Bedo nok

Gin ma ibi nongo ki i pwony man: Dongo leb, leb me tito lok, cayanc: cwec me lobo ki pwonyo lok i kom jami makwoo.

Gin ma ibitimo: Neno cok dok ki keto cwiny. Nongo ngec i kom ngo ma ineno. Diyo cwiny, tamo matut, kubbo lok.

Yoo mapapat me tiyo tic man:

- Ka itye ki peko me wang, tii ki yoo mukene me ngeo jami wek iniang cwec ma orumuwa. Winy, ngwee ki bene mul ngom, yadi ki kodi mukene matye i ngeti.
- Tit lok i kom ngo ma itye kangweyo, winyo ki mulo. Tit lok meggi atita ki doggi ki ngat mukene wek ocoo iri.
- Goo cal agoya me kaka coyo lok acoya, onyo leg ngat mo ocoo tam meggi acoya iri.

Wer manyen, dwan macon

Omyero ibed ki: Pe gin mo keken

Gin ma myero itim:

- Tam I kom wer mo keken I leb tuu ma dano weng ngeo maber dok yot adada.
- Kat ki nyig lok manyen ento I dwan marom. Itwero wero wer I kom gin mo keken ma imito. Me lapor, kit me jwayo laki, dano/gin mo ma tye I ododo ma imaro tutwal, onyo gin mo mayomo cwiny tutwal ma otimme.
- Pwony jo mukene ki wer enoni. Med tic onyo timo gin mo kace cwinyi maro.

- Man enini lapor me wer me 'lwoko cing' I leb munu I dwan me 'Happy Birthday' (kwero nino nywal). Itwero wero ne?

Wash hands well each day
To keep germs away
Scrub with soap and water
And be on your way



Mwaka: Puraimari

Kony bot ngat mutegi/omego ki lamego: Bedo nok

Gin ma ibi nongo ki i pwony man: Dongo leb, pwonyo kit ma dwan woto kwede, ngeo kit ma dwan bedo ka jwik ki ito kwede i nyig lok acel, rwatte pa dwan i acaki, dyere onyo i agiki pa nyig lok mapat-pat.

Gin ma ibitimo: Kubbe i lok, tedo wic (kati ki gin mo manyen)

Yo mapatpat me timo tic man:

- Kace itye ki ding it onyo peko mo me winyo lok, itwero ka tic ki cing me wero wer enoni onyo tic ki wat komi me wero wer.
- Itwero keto wer mo me redio ka ikato ki nyig lok mamegi giri pi wer enoni.
- Itwero goyo agulu onyo baket me kato ki dwan kun nongo ngat mukene tye ka wer.

Lemo mingo

Omyero ibed ki: Kalam kalo onyo kalam bino ki karatac

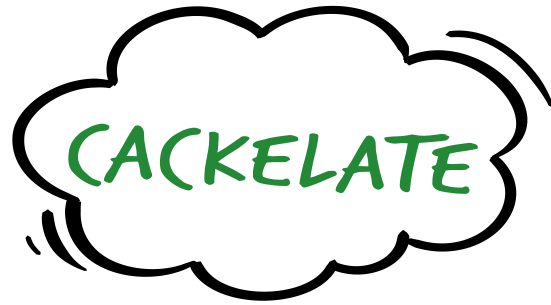
Gin ma myero itim:

- Nen lemo "mingo" i piny kanni ma a coo lemo a nyinge **Spike Milligan** ocoo. Ci irom kwanno ne aliling onyo dang alongo ka cwinyi winyo kumeno. Ket tammi makato ikom nyigkop me mingo onyo nyigkop ma pe mite.

On The Ning Nang Nong

On the Ning Nang Nong
 Where the Cows go Bong!
 and the monkeys all say BOO!
 There's a Nong Nang Ning
 Where the trees go Ping!
 And the tea pots jibber jabber joo.
 On the Nong Ning Nang
 All the mice go Clang
 And you just can't catch 'em when they do!
 So its Ning Nang Nong
 Cows go Bong!
 Nong Nang Ning
 Trees go Ping
 Nong Ning Nang
 The mice go Clang
 What a noisy place to belong

- Ma dong ityeko kwanno lemo man, coo lic me nyiglok mingo ma Spike Milligan otio kwede i ye.
- Nyiglok mingo ma ngo ma yii omaro twatwal kede pi ngo?
- Itye wunu kwede lemo mingo mogo i lobo wu onyo i leb ma megwu?
- Katto kwede nyiglok mogo me miye ma bino miyo loremi nyero. Dwon me nyero? Kit ma yen nen kwede ma dong odongo atek? Nying a nyen pi wum? Yore ango ma iromo lwongo kwede ginnoro ma bille arac twatwal? Dwon kit ma tyeni winye kwede ka itye i wot iwi potyen otwo? Nying kwon lee moro ma nyen?
- Katto kwede nyiglok abic ma nyen ma piri keni ci dong i coo tyen loke
- Coo centeny mogo, lemo me mingo onyo ceko a cek kun itio kede nyigkop ma ikatto kwede no. Iromo tic kwede mogo ikin gi ento pe gin ducu. ceng en ma yii maro matek kwede en ma winye maber karacel.
- Iromo tic kwede apor me 'On the Ning Nang Nong' macalo lanyut me telli. Tem me cakko wii cocci ku man:
 - ⊕ An iwi ...
 - ⊕ An kakwene ...
 - ⊕ An kwede ...



CACKELATE



SWEELDORP



STUMPF

Mwaka: 8+

Kony bot ngat mutegi/omego ki lamego: Bedok manok

Gin ma ibi nongo ki i pwony man: Dongngo leb, agony me nyiglok, kit ma centeny bedo kwede, nyiglok a dwon gi winye ma cacal kwede canne a lok ma weko winye ma mwonya.

Gin ma ibitimo: Katto kwede diro mapapat, kubere i lok, gonynyo nyiglok.

Yo mapatpat me timo tic man:

- Tim lemo man kun ikobo akoba ki dogi onyo ileg dano mo me coo ni piny
- Coo lemo me layin 2.

Pit nyig kodi ci dong i nen kit ma dongo kwede

Omyero ibed ki: Nyig kodi, ngom me pito, pii, yat me agura

Gin ma myero itim:

- Yer gin ma imitto pitto. Nyig orangka, apena onyo kodi moro okene? Itye ka mitto pitto gin mo me acama? Lim ngec ikom kodi mene ma dongo maber i kare man kwede kodi mene ma nwonge.
- Mok tammi ikom kwene ma ibipito nyigkodi man i ye. Iyi gulu a onyo piny i ngom? Ka piny i ngom, yer kan ma lee mom twero yello ne. Lim ngec ikom kan ma opore me pitto kodi man. Kan ma ocello woko? A tipu tye i ye a onyo ikom ceng?
- Pit kodi ma meri kan ma doo pe i ye. Pit nyig koti 2 onyo 3 me nyigkodi acellono i kabedo acellono wek okony gwok moromoro okwer tu. Oony pii I ye maber.
- Coo alam ma nyuto gin ma ipito ni. Coo nying gin ma ipito ni ci ingab iwi lut ci dong i gur lut man i ngom inget koti ma ipito ni.
- Oony pii i ye nino ki nino onyo polkare ma oromo wek ngom orom bedo ma ngic.

Tic mukene mameda:

- Rot kit ma tye ka dongo kwede nino i nino. Gwok rikod me dongo ne. Ngii kit ma nyig kodi man tye kwede inge tuu ne. Nine adii ma tero ma pote fodi otuu? Ma fodi oturu? Ma foddi onyak? Coo piny ngo ma ineno.



Mwaka: Mwaki weng

Kony bot ngat mutegi/omego ki lamego: bed manok

Gin ma ibi nongo ki i pwony man: Pitto cam, ngom ma opore, gwokko gin apita.

Gin ma ibitimo: Neno, tyekko peko ma tye.

Yo mapatpat me timo tic man:

- Ka itye ki peko me wowota, iromo pitto nyigkodi ni iyi agulu iyi ot.
- Iromo tunu i ye me kiro ne ki pii? Ce ni tye kan ma lero nonge i ye?
- Iromo ngollo wii cupa pulacitik ma gitio kwede ci dong itio kwede ma calo agulu.

Kwan karacel

Omyero ibed ki: Buk ceko onyo itii ki ceko ma nonge ipot karatac ma lubu eni

Gin ma myero itim:

- Ngat ma dwong onyo ladit twero kwanno ceko bot latin onyo gat ma tidi twero kwanno ne bot ngat ma dit onyo ngat mutegi. Ikare mukene bedo ber me leyo ne aleya kun itimo gin weng.
- Ceng ceko (ki iyi buk) ma wun weng umaro onyo ikatto ki ceko ma nyen. Romo bedo ne ceko makome onyo bene en ma itammo ne atama.
- Poo bene ni omyero ituk ki lokko dwoni ikare me kobo ceko man. Iloko dwoni calo dwon ingatu, ladit mutii onyo lafoo ma lworo odio iyore mene?
- Ikare okene iyi ceko nono cung ite penyere keni ni "Ngo ma itamo ni obitime?" Tem me gecco ne karacel dul ceko man mukene. Ipot waraga ma lubu eni tye i ye ceko aryo ma cego ma itwero kwanno ne wunu karacel. Itwero bene kwanno ne wunu ceko ikom 'Lafoo ki la reme Lalu'. Iya i tic ma gi mio "Go cal lee ma mwonya". Kwan dul cek man ma dwonge, mak ajija ma foddi ikwano atumi ne ci dong item me gecco ne kit ma ceko obitum kwede.
- Kwan dong atumi ne. Ce ni igecco ne kakare? Itwero bene mino diwicoc ma opore pi ceko man?

Tic mukene mameda:

- Karacel, itwero tukku wunu goga me ceko ni acel ma imaro aloo aloa bene? Mok tamwu ikom anga ma ibibedo wunu i ceko meno ci dong ituk ki yube wunu pi tukku goga ne. Tuk wunu goga me ceko ni man pi lu ot wu mukene bene.

Ceko me 1: Tembo, Iyec:

'Kur icet i kulu nam' minlyec owaco bot latine mukere latin Tembo. 'Tye nyang mo madit adada kenyo ma en obi cami woko.' Tembo otuk ki bedo ki miti me mitto niango. Nyang bene en ango? Ngat mo ma owace bene obedo pe. Kumeno, en otuk ki ceto i kulu nam. En ote cung bene i lake kulu. Ote ceto nokko ma cok bene. Ento gin ma en oneno ne obedo cal wange iyi kulu nam. En onoko cegi ento me atura ... nyang mo otuk ki pello ma ongamu cwake ci dong omake ni ... Kwap!

En omako Tembo i ume. 'Okunya wunu' Tembo odange. Mama ne otuk ki ringngo, en oyutu yib nyang icinge.. Lumegi ne oringngo ka dong olido it nyang oko bene, gin ote telle kun otele ento nyang man mom oweke. 'Ukonywa' gin odange dang me oyot dano weng ma ibung ca onwongo tye i tel.

Atumi ne:

Gitelo yibe paka odongo ma bor calo tol bene, gitelo yite ote dokko ma lac, ci ume dong odongo ma bor dok bor.. Gitele ote telle wa iyi agiki ne nyang ote weke.. Dano acelacel opoto iwi lawote iwi lum bene. Tembo onwongo tye ma ogwoke maber. Ento ango ma otime i yibe mo ma tidi mu odole ca ki yite mo ma tinotino ca, kede ... ume?

En ngo ma oweko ioo wa tin bene, Iyeci tye ki um ma boco ma gilwongo ni laklyec ki yit ma dongo calo pot kabej bene.

Ceko me 2: Ton kot adek (Lacoyo ne Terry Jones):

Ton kot mo otuk i poto i pol ci owaci ton kot ma ilagete kit man: 'An aye a dwong ma loo aloa dok a ton kot ma mwonya adada iwi yamo alutu!'

'Yin i ton kot ma tye ma ber,' ton kot me aryo owaco, 'ento yin bene pe gicweo yin ma leng calo an bene. Dok ikit ma an atammo kwede, kit ma dul kom nen ma olunge kwede en aye pire tek, kumeno bene an a ye ton kot ma mwonya aloo aloa iwi yamo alutu.'

Ton kot me acel ca owaci: 'Watyeku lak man me icel pi lung bene.' Kumeno, gi lego ton kot me adek wek okatto ki tam me agiki ikin gi. Ento ton kot me adek owaci: 'Lakodi topwic anggo ma otye ka wacco ne wunu! Iromo bedo ton kot ma dwong, dok in bene itye ton kot ma dul kome tye ma olung ma ber adada, ento, macalo dano weng ngeyo kwede, kit mupore aye pire tek, dok an a ye kita opore ma loo wun aryo weng. Kumeno bene an a ye ton kot ma mwonya ma loo aloa iwi yamo alutu!'

Atumi ne:

Kakare, ma fwod ton kot aryo mukene ca odwoko lok, gin adek weng otuk ipoto i ngom ci odoko coto mo ma orubbe atata.

Mwaka: Mwaki weng

Kony bot ngat mutegi/omego ki lamego: Malo

Gin ma ibi nongo ki i pwony man: Dongngo leb, dul yii ceko, gecca, tuku goga.

Gin ma ibitimo: Katto ki tam manyen, tic karacel, notte i tic, winynyolok.

Yo mapatpat me timo tic man:

- Iromo bene wacco ceko ibeo i leb ma tio ki alama. Wii omyero poo me tic ki loloko neno me wangi a pol.
- Tuk goga me ceko man kun itiyo ki nying ma iyero.

Dwar pa acut

Omyero ibed ki: Karatac ki kalam kalo

Gin ma myero itim:

- Dwar pa acut en aye ceto ka moo no jami ma tye i lic. Iromo 'dwaro' iyie onyo ooko. Ka itye ka dwar ki dano mukene bene, ngat me acel mukwongo nwongo jami weng ma i lic en aye nwongo olanyo.
- Ngii lic. Ma piri keni onyo kwede jo mukene, ikin kare arom kwene ma iromo joggo iye jami weng ma i lic?

- *Gin mo ma bululu*
- *Gin mo ma yom*
- *Jami aryoma giyubo ioo ikom bao*
- *Gin mo ma mit*
- *Jami adek ma cake ki nukuta acel ma rwate arwata*
- *Gin mo ma ryeny*
- *Gin mo ma gitiyo kwede me jwano jami*
- *Gin mo ma imaro*

- Ki ka idwaro dwar pa acut wun ki ngat mo mapat, tuk ki poro jami ma papat ma wujogo.
- Aman dong yub lic ma meggi. Tic ki alilcoc(yom, mit, ryeny) kede kala apapat obedo acaki a ber. Ngii lapor ma imalu no ci inen gwok iromo katto ki lic ma meggi me jami 10 me amoa.
- Coo lic ma meggi ci ilego ngat mukene me ceto ka moyo jami nono.



Mwaka: Mwaki weng

Kony bot ngat mutegi/omego ki lamego: Bedo nok

Gin ma ibi nongo ki i pwony man: Dongngo leb (alilcoc kede nyinge), kwanno wel.

Gin ma ibitimo: Katto ki tam ma nyen, tyekko peko, note i tic.

Yo mapatpat me timo tic man:

- Yer ka jami ma iyi icika acel ma i gang ni.
- Cim jami nono ci dong ilego ngat mo wek ocet ka gamo ne piri.
- Kwan ki ngat mo wek ocoo ni piny jami ma imiti ocoo i lic ma meg.
- Ka itye ki peko me neno, iromo leggo ngat mo wek ogam jami pire en ma odoko ne, ci dong okn gi icika acel. Laten aryo? Buke aryo? Ware aryo?

Agony imung

Omyero ibed ki: Kalam kalo onyo kalam bino ki karatac

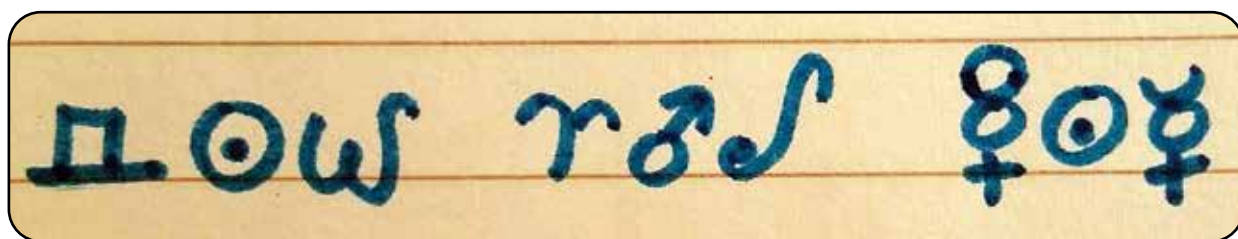
Gin ma myero itim:

Tye yore mapol me katto ki agony imung ma meri ma gicoyo acoa.

- Iromo loko nukuta acelacel i nukutae me lebi ki namma kun icako ne ki namma ma malu ka dong idwogo kede adwoga langec langec. Lapor, lenmunu tye ki nukutae 26 ci dong $a=26$, $b=25$, $c=24$, $d=23$ kumeno kumeno. Iromo titto ngo ma man gonyo bene? 8 22 24 9 22 7 24 12 23 22
- Iromo bene lokko nukuta acel acel ki nukuta mukene kun bene igwoko gi ikakar gi iyi nukutae me lebi. Lapor, $a=h$, $b=i$, $c=j$, $d=k$, $e=l$, $f=m$ kumeno kumeno.

a	b	c	d	e	f	g	h	i	j
r	o	x	◊	∫	5	II	II	⊖	⊙
k	l	m	n	o	p	q	r	s	
∫	≈	∩	H	⊙	ε	☙	♂	□	
t	u	v	w	x	y	z			
△	♀	♀	ω	II	♀	▣			

- Iromo bene katto ki alama manyen ma meggi pi nukuta acel acel me lebi macalo onyutu iyi lapor mukato nu. Ka bene imoko tami me katto ki alama ma meggi, penye keni keni lapeny magi:
 - ⊕ Omyero lagony ma mega ni ocoo cakko ki tung lacam dok tung lacem bene? Onyo cakko ki malu dwogo lapiny?
 - ⊕ Omyero abed ki wel namma me alama ma rom aroma ki wel namma me nukutae i leb? A onyo abed ki alama mogo ma cung la ka nukate acellono ? (Man obi miyo bed matek ada ki dano mukene me kwallo agony imung man).
- Itwero bene katto ki nyigkop ma i lebmunu kun ijenge ikom alama ma gi mi no in i pot karatac mukato ca? (bed kede iwi , ipe ki langony imung weng bene!)



- Yub kalam/ kalam kalo ki karatac ma meggi be atera. Coo lagony imung ma meggi iyore iyore weng. Ki iyonge ne coo lok imung ka dong inen ka dano mukune twero bene kwallo lagony imung ma meri ni.

Mwaka: Mwaki weng

Kony bot ngat mutegi/omego ki lamego: Bedo nok

Gin ma ibi nongo ki i pwony man: Dongngo leb, coyo, gatto.

Gin ma ibitimo: Katto ki ngec ma nyen, kubbe i lok, tyekko peko.

Yo mapatpat me timo tic man:

- Ka itye ki peko me neno, itwero katto ki acimtim me imung. Ceng dwon macalo`ka', `ub' onyo `sha'. Dii dwon man inyim nyigkop weng, onyo inyim dwon nukutae weng. Lapor,ka i wacci "Yia yom" I lebmunu, romo winye macalo`kai kamkahapkapy'.

Kit kom (Cep) ki paten ma iwi lobo

Omyero ibed ki: Ludi ki gwenge

Gin ma myero itim:

- Cet ooko. Cepe ki patene adii ma ineno iwi lobo me kan ma ikwo iye? Ngii bene jami ma ya ki iwi lobo kany ma itye kwede i gang ma meri, macalo nyig yen acama ki pot deke.



- Cepe ki patene mapapat adii ma iromo mi no nying gi? Itwero nongo gin mo ma:
 - ⊕ Poke ki yie aryo marom?
 - ⊕ Ma oriria aria?
 - ⊕ Ma ogure?
 - ⊕ Ma nwoo no paten ne wang ma pol?
 - ⊕ Ma tye ki cep pa acer onyo cep pa adunu?

- Gwok ineno pot yen ma nen ma calo yen matino tino? Itwero nonge ne kit pot yat ma eno? Itwero kwanno ne wel dulkome ma tino tino i jang pote no?
- Jog ludi ki gwenge. Cepe mene ma itwero yubu ne ki jami nono? Ce ni itwero yubu ne:

- ⊕ Cep ma gwic ne tye adek onyo en ma obedo cikweya?
- ⊕ Cep ma gwic ce tye abic (pentagon)
- ⊕ Ekcagon (cep me gwic abicel)
- ⊕ Oktagon (Cep gwic aboro)



- Itwero yubu cep ma langete tye adek ki ludi kwede gwenge ni no? Lapor re, piramid onyo kiyoboid?

Mwaka: Mwaki weng

Kony bot ngat mutegi/omego ki lamego: Bed nok

Gin ma ibi nongo ki i pwony man: Nying cepe, nyigkop me lok ikom patene, kwanno wel.

Gin ma ibitimo: Katto ki tam ma nyen, tyekko peko, kubere, neno.

Yo mapatpat me timo tic man:

- Gwok ipe ki kan mo ma iromo bebea i ye inget ot ma meri, ce ni itwero bene bebea iyi kabedo pa jiranie ni?
- Ce ka itye ki peko me bebea, tye dano mo ma twero mi ni jami ma gi jogo karacel wek ikeboro?

Gure I lawala me tito ododo

Omyero ibed ki: Kalam kalo onyo kalam bino ki karatac.

Gin ma myero itim:

Itwero tiyo tic man ki jo adek onyo ma kato. Guru yi bedo karacel.

- Ngat acel cako ceko, labol, **“tye latin nyako mo ma onongo mom twero nino. En loke i kabutu mere tungi, tungca ento nino mo nongo pe”**.
- Gik kany. Leg ngat mukene iyi gure ceko man me mede ki ceko no pi witkop acel onyo aryo, labol:

“En obedo ka ngii no dwe ma onongo ogure madit. Ki me atura gin mo otuk ki wok i wang dwe kun wok tung bote. Onwongo obedo gitwar mo ma cilba ma obino piny, piny, piny wa i wang dirija ne”.

- Kob ceko man bot ngat mukene wek omede kwede. Itamo ni iromo mede i ceko man pi cawa arom kwene? Ce ka utye wun aryo kiken, leye wunu.
- Leg dano acel wek odol ceko ni iyunge wun weng ileye wunu pi tyeno aromo aryo.
- **“Gure me ceko”** man cikere gin aye:
 - ⊕ Tii ki tam me dii wii, gin mo kiken twere bene!
 - ⊕ Cor ceko lanyim (mom iromo wacco ka ni'en oceto malu iyi icaka amalu' ki dong igik woko. Omyero imede iwacco lok ma popol calo 'en oceto iyi icika amalu wa oo wa iwi icika ne ka oneno ...')
 - ⊕ Kur iwac ceko weng. wek ngat mukene omede kwede.
- Iromo bene cengo kwon ceko moro kiken. Twero bene bedo ceko me adaa(macalo ikom kwera onyo wenu) onyo ikom lee mo onyo ceko ma oya i tam ma itamo idii wii.



Mwaka: Puramari

Kony bot ngat mutegi/omego ki lamego: Bedo nok

Gin ma ibi nongo ki i pwony man: Dongngo leb, dul yii ceko ki cik me ceko: gin ma iromo onyo pe iromo timmo ne ma dong icako ceko.

Gin ma ibitimo: Tam oyot, katto ki tam ma nyen, kubbe i lok ki note i tic karacel.

Yo mapatpat me timo tic man:

- Ket latakataka 10 ma tinotino ma nonge i ot ma meri i cao – gin mo kiken ma iromo nongo ne, (labol kopi, gweng, kopa bongo). Kwany gi ki acelacel iyi cao, tii ki caa ma ikwanyo kwede gin mo no me meddo witlok acel onyo aryo i ceko. Labol, 'Iwi icika ot ma nonge malu en oneno kopi, kopi mola ma gin amata mo ma mwonya onongo tye ka mol ki ye ...'.
- Coo piny ceko a mwonya ma wukatto kwede karacel. Med lalilcoc ki leb ma lilolok wek obed ma mit adada.

Foo lateka ma ikin lwak

Omyero ibed ki: Karatac ki kalam kalo

Gin ma myero itim:

- Lateka ma ikin lwak twero bedo dano adana ma okonyo lwak mukene i kan ma en kwo i ye onyo ma onyutu kero me mede lanyim ki kwo kadi kono bed ni en tye ki peki mapol. Ngat mo kiken twero bedo lateka. Tye ngat mo macal kit man ma ingeyo ne?
- Tam kong ikom lateka ma ikin wu. Gin aye anga gi? Ngo ma gi timo? Ngo ma imaro i kwo ma meg gi?
- Yore anga ma imito foo no lateka ni kwede? Cal ma gigoyo, calle ma gimako maber a onyo wer ma kwogo jami ma gi timo? Waraga me foc onyo kit mot mo mapat? Onyo dang itye ka mitto wacce ni 'afoyo'.
- Yub mot ma meri/coo waraga foc meri ki dong inong yore mupore me mi no tuno bot lateka ma meri. Leg ngat mo madit onyo wat mutego me kony no in kwede tic man.



Mwaka: Puramari

Kony bot ngat mutegi/omego ki lamego: Mapping

Gin ma ibi nongo ki i pwoony man: Dongo pa leb.

Gin ma ibitimo: Kubbe i lok, teddo wic, cako bedo ki ber kit ki kica.

Yo mapatpat me timo tic man:

- Lok aloka wek ngat mo ocooni lok meg i enoni macalo waraga. Goo calm o wek owot kacel kwede onyo med mic mo.

Dwar lonyo

Omyero ibed ki: Kalam kalo onyo kalam bino ki karatac

Gin ma myero itim:

- Dwar lonyo obedo tuku ma lutuko moyo ki jami ma okano ma kungu gi lubu lanyut mogo ma gimiyo. Lanyut ma ilubu ne telli wa ikom lanyut mukene ma lubu ni oo wang ma itunu ikom lonyo ma gikano no. Lonyo me anwonga ni twero bedo gin mo ma in iyubu – gin mo ma titidi ma yomocwinyi onyo gin acama (omyero inen ni ka ikano lee pe en ma oero oo i ye me acel!) Tam kong anga ma imito yubu dwar lonyo ni pire– omero/lamero matidi onyo madit? Ngat mutegi? Omyero icoo lanyut mupore pirgi mawope ki mwaki gi dok bene ma git wero niangngo (nen labol mogo mapiny kany).
- Tam lakwene ma imiti dwar lonyo ni timere i ye – iyi ot a onyo ooko onyo i kabede no weng? Dwar lonyo ni obicake ki kwene dok tum lakwene?
- Ceng kabede (kan ma obiketo i ye lanyut) me dwar lonyo. Yat ma dit, kabat ma iyi ot, onyo lanyut twero bedo ki wat me paco kano ma pe obidonyo i tuku man. Kabede ma romo aboro nongo romo. Coo kabede magi piny ci dong imii gi namma ma kun kole akola iyore iyore.
- Coo layut me kabedo acelacel i pot karatac mapapat.
- Omyero inen ni lanyute magi lutuko twero niangngo gi ento gwok imii gi obed ma yot lajwic! Labol:

⊕ Lanyut: Atye ki macungwa ma mit, nyigyat mudokmudok (Kabedo: yat muyeme)

⊕ Lanyut: Man en kan ma ileko i ye i dyewor (Kabedo: kabuto)

Itwero tic ki nyiglok ma gi rucu yie (kan ma irucu kine nukutae me nyiglok man) labol:

⊕ Lanyut: **KAMA IPI** (Kabedo: Amak pii)

⊕ Onyo itwero tic ki lagony imung ma iyubu ayuba

- **Mii lanyut namma ci idol woko me wek namma ne kenekene en ma nongo tye ka nen.**
- **Omyero imii lutuko lanyut me lakwong ma obitelo gi tero gi ikom lanyut ma lubu kumeno kumeno.** Gwok lanyut mukwongo langec ci dong ikan lanyut mukene weng ikabede gi mukole akola – tii ki lic ma icoyo lajwic wek okonyi macalo lapoo wic ma nyutti lakwene ma myero ikan gi i ye. Lanyut ikom namma acel en kan ma ikano i ye lanyut me aryo. Lanyut ikom namma aryo en kan ma ikano i ye lanyut me adek; kumeno kumeno. Lanyut me agiki en kan ma ikano i ye 'lonyo' ma gidwaro ni. Ci ka latuko tye makato acel woko, umok tam wu karacel ikom cik ma myero gi lub. Macalo labo, cik mukene twero bedo ni:
 - ⊕ Omyero wakur ngat acelacel ma foddi wa ceto i lanyut ma lubu.
 - ⊕ Omyero wa leye me mi no wa tyekko lanyut maber.
 - ⊕ Omyero wa nywak lonyo man kacel ma dong wa nongo ne.
- **Mii lanyut mukwongo.** Bebea kacel ki latuko/lutuko gwok gi moko dok gi mito kony me niangngo lanyute.

Mwaka: 10+

Kony bot ngat mutegi/omego ki lamego: Dano ma idyere dyere

Gin ma ibi nongo ki i pwony man: Dongngo leb, coyo, gatakino.

Gin ma ibitimo: Canno maber, canno mukole akola, katto ki tam manyen, lwoddo tam, kubbe i lok, nywakko tic, tyekko peko.

Yo mapatpat me timo tic man:

- Lego ngat mo wek okonyi coyo lanyute.
- Coo ka lanyute 3 onyo 4 kiken.
- Gwok itim dwar lonyo man macalo gin mucung apire kene ento lanyut acelacel omyero otelli wa ikom lonyo ma tidi mo. Man miyo bedo yot me yubu ne.
- Yub lanyut ma yot nibeo igoyo cal.

Lapenye pyeroaryo

Omyero ibed ki: Pe gin mo kiken

Gin ma myero itim:

Tic man tio maber ikin jo aryoy tunu wa iyi abic me wek ngat acelacel bed ki kare me penyo lapeny.

- Iromo kwanynyo ngat mo ma igurup ma megwu wek obed lakwong, macalo labol, dano ma yot onyo ngat ma fod obedo ki kwera me nywalle ne acegicegi ni.
- Ceng dano, kabedo, onyo gin mo.. Tam ikom ngat mo onyo gin mo ma itye ki ngec muromo ikome ma twero konyi gammo lapenye mogo akwake. Ka icengo dano, twero bedo en makwo onyo mutoo, onyo dang en ma itamo atama (iya i ceko). Omyero inen ni icengo dano, kabedo onyo gin mo ma pol dano i gurup ma megwu tye ki ngec ikome.
- Gwok iwac ki dano mo gin ma icengo ne ru. Wek gi ogeci
- Jo mukene ne penyo lapeny ma lagam ne bedo ee onyo pe. Labol:
 - ⊕ "Obedo dano?"
 - ⊕ "Obedo kabedo?"
 - ⊕ "Obedo gin mo?"
 - ⊕ "Ada bene gwok itamo atama?"
- Leye wunu ipenynyo lapeye me ee onyo pe. Omyero inen ni latuko acelacel obedo ki kare me penyo ooloto lapeny acel. Ce ka latuko openyo lapeny ma lagam ne pe bedo 'ee' onyo 'pe', mii gi oyub kite me penyo lapeny gi wek bed ma lagam ne romo bedo ee onyo pe. Macalo labo, latuko mom twero penyo ni, 'Mwaka gi adii?' ento gitwero penyo ni, 'Mwaka gi kato 50 kulu oko?'



- Makun imede, peny lapeny ma ocung ikom gin mo. Tam kong lapenye ma otyeko peny gi woko mafod ru ipenyo lapenye manyen. Macalo labol, ka dano mo ni dong otyeko peny lapeny ikom caji, cet ipeny lapeny ikom rangi onyo gin ma oyiko gin mo no niya i ye.
- Tuk wunu wang ma utunu lapenye 20 onyo ma ngat mo omiyo lagam ma opore. Kwan wunu wel lapenye no karacel. Ce ka gurup otunu oko i lapenye 20 ma fod ru ogeco dano, kabedo, onyo gin mo no, wacci gi ngo ma obedo. Aco ka ngat mo ogeco woko ngo ma obedo ma fod ru otunu lapenye 20, nongo tuko otum woko.
- Mii ngat mugeco ateni no bed ngat ma leyo tello tuko. Ka ngat mugeco dano, kabedo onyo gin mo no peke, ngat ma mito leyo tuko twero wot lanyim me leyo ne. Mii dano weng kare me tammo gin mo. Mi no dano weng kare me leyo tuko weko tuko gwao dano dano duc dok bene weko dano duc nongo lakit yomcwiny mo me tuko!



Mwaka: Mwaki weng

Kony bot ngat mutegi/omego ki lamego: Bedo nok

Gin ma ibi nongo ki i pwony man: Dongngo leb, epone jami.

Gin ma ibitimo: Kubbe i lok, lwoddo tam, tyekko peko.

Yo mapatpat me timo tic man:

- Mii lapenye obed i kom dul jami moni , macalo labol, 'leyi', 'cam', onyo`jo muywek'. Wac ki lutuko dul mene ma obedo.
- Tuk wunu laryo aryoy wek ubed ki kare me konye i kin wu kenwu.
- Med lapenye me tuko kat 20 woko wek ubed ki gum me nongo lagam ma opore.
- Ket jami 20 ma i paco kenyo iwi meja. Iwi imung kwany acel i ye. Jo mukene ca myero ogeci ngo ma in ikwanyo.

Waraga bot lafonyi


Omyero ibed ki: Karatac ki kalam kalo

Gin ma myero itim:

- Bed atera ki kalam kalo ki karatac.
- Tam ango ma imito wacci lafonyi. Itye ka mitto wacce ngo ma itye ka timmo paco? Iromo meddo:
 - ⊕ Gin mo ma oyomo cwinyi ada
 - ⊕ Gin mo ma ballo wic ma otimme
 - ⊕ Gin mo ma tek ma itimo
 - ⊕ Gin mo ma itye ka ketto tam ma meri i ye
- Coo waraga ma tye ki adurec ki nino dwe ma gi coyo i ye ci dong iket capa cingi i ye.
- Ka twere, iromo tero waraga man iyore maber paka bot lapwonyi . Leg ngat mutegi onyo wat madit wek okonyi.

Dear mus kper,
 I thyeed tee nicks and i loved it. I + was sunny
 when me and my mum got tangled up in the
 sunny ball. I also thyeed nicks same, and all the
 different games on it. some of them are difficult
 and some of them are really sun!. I'm looking scaw-
 ard to making something out of wood. yours

sincerely,

Thio: 

Tic mukene mameda:

- Itwero coyo lagam ma itamo atama ma lafonyi odwogo ki in ikom waraga ma megii? Tii ki nyigkop ma lafonyi romo tic kwede.
- Ce ni itwero coyo waraga moro ma ballo wic bot lafonyi ma iwacce i ye ngo ma oweko pe itimo tic ma omii i cukul me atima i paco? Kong itam lakodi pido ma itwero miyo, macalo labol:
 - ➞ "dyel ocamo buk ma mera woko".
 - ➞ "yamo ma kuto matek adada okolo buk ma mera woko".
- Tii ki lapor ma piny kan ni me coyo waraga ma meri.

Lapwony me amara

Tima kica ba pi pe timmo tic ma imiya i cukul me atima paco. Akwao kica matek ento... (ngo mutime?)...

Abi ... (ngo ma ibino timmo?)...

Lamot ma mwonya boti, cing:



Mwaka: Mwaki weng

Kony bot ngat mutegi/omego ki lamego: Bedo nok

Gin ma ibi nongo ki i pwony man: Dongo leb, coyo waraga, dull yii lok, gatakino.

Gin ma ibitimo: Katto ki tam manyen, parro pi jo.

Yo mapatpat me timo tic man:

- Kwan waraga meri ni bot ngat mo (waccigi ki gibicoyo iri)
- Coo latin waraga.
- Goo cal pa jami mapat-pat ma itye katimo ki gang ki lapwonyi.